

BMW 4 Series
Convertible
Coupé

www.bmw.com



Sheer
Driving Pleasure



THE BMW 4 SERIES. CONVERTIBLE AND COUPÉ.

BMW EFFICIENT DYNAMICS.
LESS EMISSIONS. MORE DRIVING PLEASURE.

THE NEXT
100 YEARS





BETWEEN HEAVEN AND EARTH.

THE BMW 4 SERIES.





The BMW 4 Series Convertible

AN IRRESISTIBLE FEELING OF FREEDOM.

- 06 Exterior**
Aesthetic, elegant and incredibly sporty.
- 08 Hardtop**
Perfect for any weather.
- 12 Room for space**
Sporting elegance and clever functionality.
- 14 Interior**
Inner freedom.



The BMW 4 Series Coupé

SPORTINESS MEETS AESTHETICS.

- 18 Exterior**
The lines of its body: unmistakable.
- 20 Dynamics**
Power in every facet.
- 22 Information**
Perfect in-car connectivity.
- 24 Interior**
An impressive entrance.



Technology

INNOVATIONS THAT MOVE YOU.

- 28 BMW ConnectedDrive**
So connected, you're free.
- 32 BMW EfficientDynamics**
The technology package for reduced emissions and more driving pleasure.
- 34 BMW TwinPower Turbo engines**
Maximum performance, minimum fuel consumption.
- 36 Chassis and safety**
Innovative systems for enhanced driving pleasure and safety.



Equipment

AS INDIVIDUAL AS YOUR DREAMS.

- 40 BMW 4 Series Convertible equipment variations**
- 50 BMW 4 Series Coupé equipment variations**
- 60 Colours, upholstery and interior trims**
- 66 BMW Individual**
- 68 Standard / Optional equipment**



Overviews

A SUMMARY OF EVERYTHING ON OFFER.

- 78 Technical data and information on fuel consumption and CO₂ emissions**
- 82 BMW Service**
BMW Service, BMW Financial Services and the BMW experience.



Editorial

ATHLETIC THROUGH AND THROUGH: THE BMW 4 SERIES CONVERTIBLE AND THE BMW 4 SERIES COUPÉ.

Always fascinating: the BMW 4 Series excels through sportiness and sheer elegance. As a Convertible, it communicates an irresistible feeling of freedom and impresses with its powerful presence. As a Coupé, it combines compelling athleticism with irresistible styling, and embodies a completely new kind of dynamism. Whichever BMW 4 Series you choose, you can look forward to an exhilarating driving experience. Discover the BMW 4 Series Convertible and the BMW 4 Series Coupé!

- ➔ www.bmw.com/4coupe/design
- ➔ www.bmw.com/4convertible/design



In 2016 the BMW brand will be celebrating its 100th anniversary. Find out more at www.next100.bmw

BMW 4 Series Coupé



Equipment of model shown: BMW 430i Convertible with Luxury Line.

Engine: BMW TwinPower Turbo four-cylinder petrol engine
Transmission: Eight-speed Steptronic transmission
Max. output: 185 kW (252 hp)
Wheels: 19" light alloy wheels Multi-spoke style 399 with mixed tyres
Exterior colour: Mineral White metallic
Upholstery: Dakota leather in Saddle Brown with Exclusive stitching
Interior trim: Ash Grain fine-wood trim with metal inlay and Pearl-Gloss Chrome accent line

Equipment of model shown: BMW 440i Coupé with Sport Line.

Engine: BMW TwinPower Turbo six-cylinder in-line petrol engine
Transmission: Eight-speed Steptronic transmission
Max. output: 240kW (306hp)
Wheels: 19" light alloy wheels Star-spoke style 407 with mixed tyres
Exterior colour: Mineral Grey metallic
Upholstery: Dakota leather in Coral Red with Black highlights
Interior trim: Finely Brushed Aluminium with high-gloss Black accent line

For further information on fuel consumption and CO₂ emissions see pages 78 | 79 and 80 | 81 or consult your BMW partner.



**DRIVING PLEASURE THAT
LOOKS GOOD FROM ANY ANGLE.**

The BMW 4 Series Convertible accelerates out of the bend – and immediately captivates the eye's attention: from whichever angle you look at it, it exercises an irresistible aesthetic appeal. Its distinctive design expresses a readiness to leap into action, to move forward. Its elegant lines, long bonnet and low silhouette exude sporting dynamism, as do the expressive Adaptive LED Headlights with full LED technology, available as an option. But each detail of this car evokes one thing above all: the irresistible feeling of pure freedom.



LET'S BE OPEN ABOUT THIS: IT'S IRRESISTIBLE.

The top opens. Sunlight floods into the interior, warm air caresses your skin – and you don't even have to stop, because the all-weather hardtop of the BMW 4 Series Convertible can be opened and closed while driving at low speed, enabling you to enjoy your BMW 4 Series Convertible 365 days a year. On the sides, sharp creases and Air Breathers add sporting interest, while the car's wide stance and muscular flared wheel arches add a powerful, athletic note to the vehicle's elegance.





IT'S ALWAYS THE RIGHT DAY
TO DRIVE A CONVERTIBLE.

365 DAYS A YEAR.



FREEDOM MEETS SPACE.

In the interior, sporting elegance combines with clever functionality for even greater comfort. When driving with the top down, the optional wind deflector reduces draughts; when it is not needed, it can simply be tucked away in the innovative compartment behind the rear backrests. In addition, optional neck warmers emit pleasantly warm air, enabling you to forget the cold on cooler days. Thanks to the optional very generous through-loading hatch, the boot can accommodate two golf bags for example – and the comfort loading function, included as standard, enables easy access to the boot even when the top is down, as the roof package can simply be moved upward and out of the way along with the boot lid, at the press of a button.





AN INTERIOR WITH **EXTROVERT APPEAL.**

High-quality materials, painstaking workmanship and individual equipment options: with details such as seatbelts integrated into the seats, the exclusive interior design of the BMW 4 Series Convertible creates an ambience that combines comfort and sporting elegance. All the controls are precisely and ergonomically oriented towards the driver. The flowing interior trim strips, whose sweep reflects the athletic character of the Convertible, turn the vehicle's cockpit and rear cabin into an integrated whole.



BROAD STANCE.
IRRESISTIBLE
PRESENCE.



Unmistakable athleticism. The BMW 4 Series Coupé combines innovative technology with an uncompromisingly sporty design. Its distinctive styling turns heads everywhere. Discover dynamism's irresistible side: the BMW 4 Series Coupé.



FOUR TIMES MORE
DRIVING PLEASURE.

A sporty, direct driving experience or superior ride comfort. Using Driving Experience Control, the car's behaviour can be adapted to your personal preferences, by selecting ECO PRO, COMFORT, SPORT or SPORT+ mode. Depending on which of the four modes you choose, the BMW 4 Series Coupé delivers lower fuel consumption, superlative ride comfort, or exceptionally agile handling.

TOUCHES.
MOVES.
IMPRESSES.



The fascination of information. In the BMW 4 Series Coupé the outside world always remains an integral part of your driving experience. The optional Navigation System Professional for example includes Real Time Traffic Information (RTTI)* (optional) and enables drivers to save fuel using the Route-Ahead Assistant. The iDrive Touch Controller, included with this navigation system, also puts all the other ConnectedDrive Services* within your reach. This makes it easy for you to remain in touch wherever you go.

* May not be available in all countries. Please consult your BMW partner.



ROOM FOR FREEDOM.

The next level of comfort. The rear seats benefit from integrated headrests and lots of legroom. The luggage compartment has room for two golf bags for example, and can be expanded using the optional 40/20/40-split rear backrest – clever details and comfort united in the BMW 4 Series Coupé.

ALWAYS READY TO ACCELERATE.

Exhilarating driving pleasure. Eyes on the road. Hands on the steering wheel. The 440i BMW TwinPower Turbo six-cylinder in-line petrol engine with the optional eight-speed Steptronic transmission springs into action. Acceleration is unexpectedly intense, pressing your body into the low-slung seats. The BMW 4 Series Coupé delivers on its promise: it only takes 5.0 seconds to accelerate from 0 to 100km/h – or just 4.9 seconds when equipped with BMW xDrive.



BMW ConnectedDrive

So connected, you're free.

Our world is becoming more closely connected every day. BMW drivers are used to the fact that their vehicle and their world are connected – that they can request information, communicate via telephone or email and always be up to date while they're on the go. The BMW ConnectedDrive concept encompasses all the services and innovative technologies that network BMW vehicles and their passengers with the world outside and the traffic around.



BMW ConnectedDrive with its intelligent services and assistance systems is ready with all the right equipment. BMW ConnectedDrive Services & Apps offer more freedom by providing versatile connections between the driver, vehicle and the outside world. BMW ConnectedDrive Driver Assistance systems make driving a BMW safer and more comfortable. And intelligent systems make life easy for the driver and minimise the dangers of traffic.

For more information, please see:

➔ www.bmw.com/ConnectedDrive

CONNECTED DRIVE SERVICES.

The **BMW ConnectedDrive Services***¹ option provides the driver with a wide range of information, entertainment and service features on the road.

It also includes BMW Online, which enables you to access current, localised information such as weather, news and an online search powered by Google™, as well as various office functions. You can also combine individual services and features such as webcams, fuel price info, parking information, travel and hotel guides in the “Applications” menu.



The secure and comfortable use of selected smartphone applications is also included for an unlimited period of time. The ConnectedDrive Services option also includes access to the **BMW ConnectedDrive Store**, in which services and apps can be booked, extended and selected according to individual needs, at any time and from any place. The ConnectedDrive Services option also offers much more to make each journey in a BMW into a real experience.

* May not be available in all countries. Please consult your BMW partner.

¹ For further information on BMW ConnectedDrive, please visit www.bmw.com/connecteddrive

Image shows features that are only available for the German market.

BMW CONNECTED DRIVE SERVICES & APPS – INTELLIGENT CONNECTIVITY.

The **BMW ConnectedDrive Services & Apps*** – configuring them according to your individual needs is now quicker and easier than ever before. Listening to your favourite kind of music on every journey? No problem with AUPEO! personal internet radio.



AUPEO! PERSONAL INTERNET RADIO – CREATE YOUR OWN RADIO PROGRAMME.

With a smartphone and the AUPEO! personal internet radio app you can make sure that you will only ever hear music that you like. Customisable internet radio adapts itself to your musical taste. Choose from over 120 music genres, to access a music library that currently comprises over one million songs. Use the “Love” and “Ban” buttons in the Control Display to define your musical preferences. The smartphone is connected to the car via the snap-in adapter or a cable recommended by BMW. This function requires the Navigation System Professional.



INTERNET – INFORMATION AT YOUR FINGERTIPS.

Whether you need to check the balance in your bank account, place a bid on eBay or look something up in Wikipedia, the BMW ConnectedDrive Internet option ensures that you can do whatever you need to do online. To enable you to surf to your heart's content, the iDrive Controller in the centre console doubles as a computer mouse.



BLUETOOTH OFFICE – ALWAYS IN TOUCH.

Bluetooth Office enables BMW office functions such as emails, appointments, tasks, contacts and text messages to be shown on the Control Display or read aloud over the audio speakers using the read-aloud function. All compatible mobile end devices are listed at www.bmw.com/bluetooth.

BMW CONNECTED DRIVE DRIVER ASSISTANCE – A CO-DRIVER WHO THINKS AHEAD.

BMW ConnectedDrive Driver Assistance includes innovative functions that enhance safety and convenience, maximising your driving pleasure. Knowing in advance what sort of bend is coming up next? The full-colour BMW Head-up Display tells you. Receiving timely collision warnings? The Driving Assistant takes care of it.



BMW HEAD-UP DISPLAY¹ – ALWAYS SEE WHERE YOU'RE GOING.

The full-colour BMW Head-Up Display projects information relevant to the journey directly into the driver's field of vision, thereby allowing them to fully concentrate on driving. The display includes information such as the current speed, navigation directions, Speed Limit Info incl. no-overtaking indicator, along with telephone and entertainment lists.



DRIVING ASSISTANT – KEEPS THE RIGHT DISTANCE AND SAVES YOU FROM STRESS.

Driving Assistant combines the Lane Departure Warning and Approach Warning systems. The Approach and Pedestrian Warning with City Brake Activation issues a warning if there is a risk of collision with vehicles or pedestrians while travelling at speeds between 10 and 60km/h and brakes the vehicle in the event of an emergency. From a speed of approx. 70km/h, the Lane Departure Warning draws the driver's attention to an unintentional lane change by means of slight vibrations in the steering wheel.



NEW GENERATION NAVIGATION SYSTEM PROFESSIONAL – LEAN BACK AND LEAVE THE ROAD TO YOUR BMW.

Navigation System Professional incl. hands-free kit, with USB interface, fixed LCD colour display with split screen function (main and assistance windows), Radio Professional with DVD drive, 20GB storage capacity for audio files and Real Time Traffic Information in conjunction with BMW Assist. The unit is operated intuitively via the iDrive Controller with direct menu control buttons and eight functional bookmarks. Maps are displayed in 3D with satellite background images. Selected sights are shown as photorealistic images.

* May not be available in all countries. Please consult your BMW partner.

The images shown here are equipment examples. Features are individually specific to every BMW. Depending on the model, the Control Display and presentation of content may differ.

¹ The information in the BMW Head-Up Display is not fully visible when wearing polarised sunglasses. Functionality shown is dependent on equipment. Further optional equipment is required for additional displays.

BMW EFFICIENT DYNAMICS.
LESS EMISSIONS. MORE DRIVING PLEASURE.



BMW EFFICIENT DYNAMICS – MAKING A LITTLE GO A LONG WAY.

For BMW, the focus is always on delivering quintessential BMW driving pleasure. The pioneering BMW EfficientDynamics strategy, used across the entire model range, supports this goal using innovative technologies that minimise the vehicles' fuel consumption and emissions while at the same time enhancing dynamic performance and driving enjoyment.

It's a comprehensive technology package that encompasses the engine, energy management and the vehicle concept – and is standard in every BMW. The new generation of petrol and diesel engines in the BMW TwinPower Turbo family is responsible for the improved performance and the reduction in emissions. Optimised aerodynamics and BMW EfficientLightweight contribute to increased efficiency. The BMW intelligent lightweight construction concept is all about using the right material in the right place, in order to lower weight, increase rigidity and thus achieve maximum agility.

BMW is leading the charge in terms of innovation in this area and is the only major car manufacturer that uses ultralight and highly rigid carbon fibre (CFRP). BMW also focuses on forward-thinking drive train concepts such as the BMW eDrive technology with a 100% electric powerplant, as well as plug-in hybrid models.

Overall, the technology package encompasses a multitude of optimisation measures in every BMW. Other features such as the ECO PRO mode, the Automatic Start/Stop function, the optional eight-speed Steptronic transmission and Brake Energy Regeneration also contribute to reductions in fuel consumption and emissions, as well as enhanced performance and driving pleasure. Included as standard in every BMW.

THE BMW EFFICIENT DYNAMICS MEASURES IN THE BMW 4 SERIES CONVERTIBLE AND COUPÉ AT A GLANCE.

The **Automatic Start/Stop function** automatically switches off the engine during brief stops, for example at a red light or in a tailback, in order to save fuel. When the driver operates the clutch (manual gearbox) or releases the brake (Steptronic transmission), the engine is automatically restarted within fractions of a second.

In petrol engines, **BMW TwinPower Turbo technology** combines a TwinScroll turbocharger with Valvetronic, Double-VANOS and High Precision Injection. In diesel engines, it similarly combines specially optimised turbocharger technologies with the most advanced generation of CommonRail direct injection technology and variable turbine geometry. In this way, BMW TwinPower Turbo technology significantly reduces the fuel consumption of petrol and diesel engines – while at the same time raising power output across a wide range of engine speeds.

Brake Energy Regeneration means that the alternator normally only generates electricity when the driver takes his foot off the accelerator or brakes – making productive use of excess kinetic energy to feed the battery.

The **8-speed Steptronic transmission** ensures particularly smooth gearshifts and outstanding driving comfort, thanks to fast engine speed transitions and tightly spaced gear ratios. It unites superb comfort with impressive dynamics and increased fuel efficiency.

The **ECO PRO mode** helps drivers achieve fuel savings of up to 20 per cent depending on their individual style of driving. The coasting function, Route-Ahead Assistant and ECO PRO Route increase the potential savings by another five per cent.

Thanks to wide-ranging **aerodynamics** optimisation measures the BMW has an outstanding drag coefficient, enabling maximum fuel efficiency. This includes features such as large-scale underfloor panelling, the Air Curtains in the front apron, and Air Breathers behind the front wheel arches.

The **Optimum Shift Indicator** shows the most efficient gear to use in any driving situation. In all BMW models equipped with a manual gearbox, or when driving in manual mode in a car with Steptronic transmission, a cockpit display helps the driver save fuel through timely gearshifts, especially in urban environments and when driving long distances.

ENGINES WITH THE RIGHT VALUES. BOTH FOR ACCELERATION AND FUEL CONSUMPTION.

The petrol engines. The innovative BMW TwinPower Turbo petrol engines are a key component of the BMW EfficientDynamics strategy and have already received several awards. They combine the latest fuel injection systems with fully variable output control and innovative turbocharging technology. All petrol engines comply with the requirements of the EU6 emissions standard.

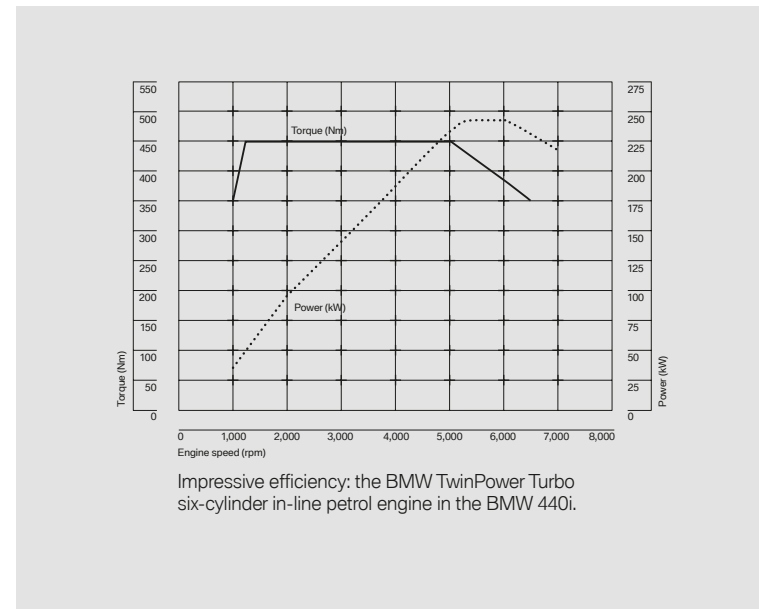


BMW 440i/440i xDrive.¹

This 3.0-litre BMW TwinPower Turbo six-cylinder in-line petrol engine combines a TwinScroll turbocharger with Valvetronic, Double-VANOS and High Precision Injection. This intelligent package of innovations lowers average fuel consumption to just 7.4–7.7 litres per 100km (440i xDrive: 7.7–7.9 litres) in the Coupé, and 6.8–7.2 litres per 100km (440i xDrive: 7.3–7.6 litres) in the Convertible. CO₂ emissions are 172–179g/km (440i xDrive: 179–185g/km) for the Coupé, and 159–167g/km (440i xDrive: 169–177g/km) for the Convertible. The engine delivers an impressive 240kW (326hp) of power and a maximum torque of 450Nm. Acceleration from 0 to 100km/h takes 5.2 seconds (440i xDrive: 5.0 seconds) in the Coupé, and 5.4 seconds (440i xDrive: 5.4 seconds) in the Convertible. Top speed is 250km/h (electronically limited).

BMW 430i/430i xDrive.²

This BMW TwinPower Turbo four-cylinder petrol engine delivers its maximum torque of 350Nm from just 1,450rpm. Thanks to BMW TwinPower Turbo technology combining a TwinScroll turbocharger with Valvetronic, Double-VANOS and High Precision Injection, this 185kW (252hp) powerplant accelerates the Coupé from 0 to 100km/h in just 5.9 seconds (430i xDrive: 5.8 seconds) and the Convertible in 6.4 seconds (430i xDrive: 6.4 seconds). Top speed is 250 km/h (electronically limited). Average fuel consumption is 6.1–6.5 litres per 100km (430i xDrive: 5.9–6.2 litres) for the Coupé and 6.6–7.0 litres per 100km (430i xDrive: 6.4–6.7 litres) for the Convertible. CO₂ emissions are 143–151g/km (430i xDrive: 138–144g/km) for the Coupé and 154–162g/km (430i xDrive: 149–156g/km) for the Convertible.



BMW 420i/420i xDrive.

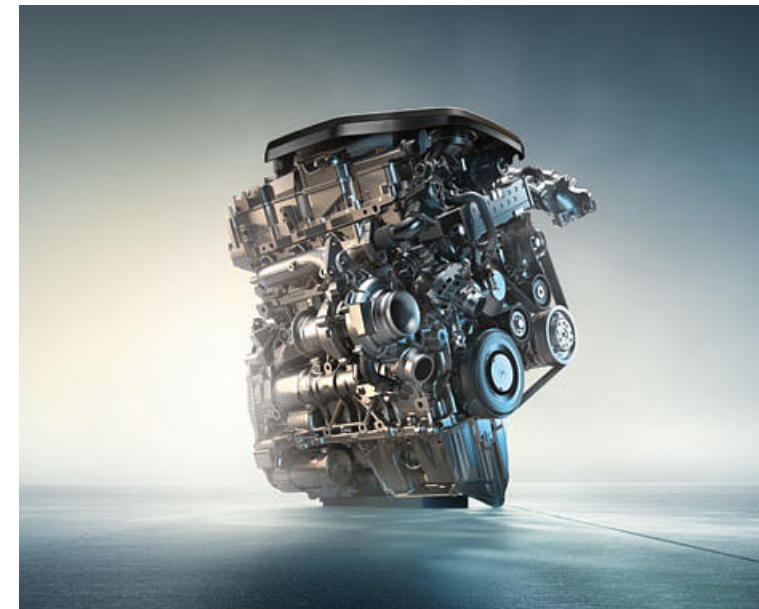
This 2.0-litre BMW TwinPower Turbo four-cylinder petrol engine combines a TwinScroll turbocharger with Valvetronic, Double-VANOS and High Precision Injection. This makes for powerful engine response combined with optimal efficiency. 135kW (184hp) of power and a maximum torque of 290Nm (270Nm with Steptronic) enable acceleration from 0 to 100km/h in 7.3 seconds (420i xDrive: 7.6 seconds) in the Coupé, and 8.2 seconds in the Convertible. Top speed is 236km/h (420i xDrive: 233km/h) for the Coupé, and 230km/h for the Convertible. Average fuel consumption for the Coupé: 5.8–6.1 litres per 100km (420i xDrive: 6.6–6.9 litres) with CO₂ emissions of 134–141g/km (420i xDrive: 154–161g/km). Average fuel consumption for the Convertible: 6.2–6.6 litres per 100km with CO₂ emissions of 145–153g/km.

Fuel consumption and CO₂ emission figures are dependent on tyre format (higher figures refer to models with optional wheels). For further information on fuel consumption and CO₂ emissions see pages 78–81 or consult your BMW partner.

¹ BMW 440i Convertible and BMW 440i xDrive Convertible come with eight-speed Steptronic transmission as standard.

² BMW 430i xDrive comes with eight-speed Steptronic transmission as standard.

The diesel engines. BMW TwinPower Turbo technology for diesel engines combines advanced injection technologies and fully variable output control with innovative turbocharger technology, for enhanced efficiency and dynamic performance. All available units have a lightweight aluminium design and are fitted with a maintenance-free particle filter. BMW BluePerformance technology, included as standard, ensures that all diesel engines comply with the requirements of the EU6 emissions standard.



BMW 435d xDrive.

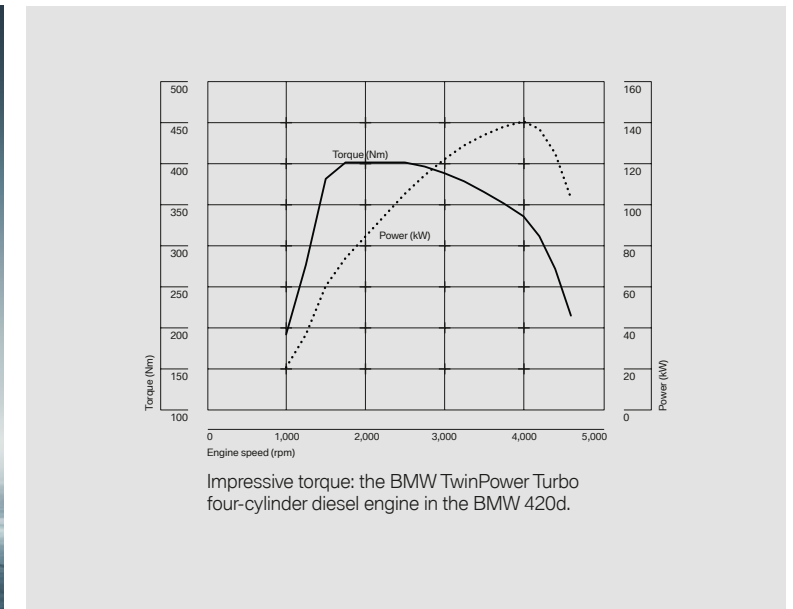
This 3.0-litre BMW TwinPower Turbo six-cylinder in-line diesel engine features CommonRail direct injection, two sequential turbochargers and variable turbine geometry. Its maximum torque of 630Nm is available at low revs, from 1,500rpm to 2,500rpm. The refined and extremely responsive engine, mated to an eight-speed Steptronic transmission as standard, has a maximum output of 230kW (313hp), enough to accelerate the Coupé from 0 to 100km/h in a mere 4.7 seconds, with the Convertible reaching 100km/h after 5.2 seconds. Average fuel consumption for the Coupé is just 5.4–5.6 litres per 100km, with average CO₂ emissions of no more than 143–147g/km. Average fuel consumption for the Convertible is 5.7–5.9 litres per 100km, with CO₂ emissions of 151–155g/km.

BMW 430d/430d xDrive.

This 3.0-litre BMW TwinPower Turbo six-cylinder in-line diesel engine features CommonRail direct injection and a turbocharger with variable turbine geometry. Mated to an eight-speed Steptronic transmission as standard, it produces an output of 190kW (258hp) as well as an impressive 560Nm of torque, available from just 1,500rpm. Acceleration from 0 to 100km/h takes just 5.5 seconds (430d xDrive: 5.2 seconds) for the Coupé, while the Convertible takes 5.9 seconds to reach 100km/h. Average fuel consumption for the Coupé is 4.9–5.1 litres (430d xDrive: 5.2–5.4 litres) per 100km, with CO₂ emissions averaging only 129–134g/km (430d xDrive: 137–142g/km). Average fuel consumption for the Convertible is 5.3–5.5 litres per 100km, with CO₂ emissions of 139–144g/km.

BMW 425d.

This 2.0-litre BMW TwinPower Turbo four-cylinder diesel engine with an output of 165kW (224hp) features CommonRail direct injection, two sequential turbochargers and variable turbine geometry. Its maximum torque of 450Nm is available from just 1,500rpm. The BMW 425d Coupé



accelerates from 0 to 100km/h in 6.5 seconds and has a top speed of 247km/h; the Convertible's 0 to 100km/h time is 7.1 seconds, with a top speed of 241km/h. Average fuel consumption for the Coupé is 4.6–4.9 litres of diesel per 100km, with CO₂ emissions of 121–129g/km, while the Convertible's average fuel consumption is 5.1–5.4 litres per 100km, with CO₂ emissions of 133–141g/km.

BMW 420d/420d xDrive.

The new 2.0-litre BMW TwinPower Turbo four-cylinder diesel engine features CommonRail direct injection and a turbocharger with variable turbine geometry to produce an impressive 140kW (190hp) of power as well as 400Nm of torque, available from 1,750 to 2,500rpm. Acceleration from 0 to 100km/h takes 7.3 seconds in the Coupé (420d xDrive: 7.4 seconds) and 8.1 seconds in the case of the Convertible. Top speed is 240km/h for the Coupé (420d xDrive: 236km/h) and 235km/h for the Convertible. Average fuel consumption for the Coupé is an efficient 4.2–4.5 litres (420d xDrive: 4.4–4.7 litres) per 100km, with CO₂ emissions of 111–119g/km (420d xDrive: 117–125g/km). Average fuel consumption for the Convertible is 4.8–5.1 litres per 100km with CO₂ emissions of 127–134g/km.

BMW 418d Coupé.

The new BMW TwinPower Turbo diesel engine combines CommonRail direct injection and a turbocharger with variable turbine geometry. The 110kW (150hp) engine delivers 320Nm of torque from just 1,500rpm. Acceleration from 0 to 100km/h takes 8.6 seconds. The combined fuel consumption is an efficient 4.2–4.5 litres per 100km, with CO₂ emissions of 110–118g/km.



THE IDEAL BASIS FOR DYNAMIC PERFORMANCE. AN EXCELLENT CHASSIS.

The BMW 4 Series Convertible and the BMW 4 Series Coupé contain a whole host of innovative technologies to help you get the most out of each drive. Many of these systems are intelligently linked with each other. Their interaction ensures that you can enjoy maximum driving pleasure, in maximum safety – on every straight, in every corner, every second of your drive.



The **Adaptive M suspension** electronically adjusts the suspension to suit the road conditions and driving situation at all times. The driver can also adjust the suspension characteristics via the Driving Experience Control to enable their preferred driving style at the time – from comfortable to extremely athletic with markedly agile handling.

The **Variable sport steering** with Servotronic creates a direct and agile steering response and ensures less physical effort is required to turn the wheel. It reacts to the angle of the steering wheel with varying degrees of steering ratio. This reduces the steering movement required when steering at particularly large angles. It features speed-dependent power steering. This provides less assistance at higher speeds to encourage an immediate and precise steering response, and increases the assistance at lower speeds for greater comfort, for example when parking or manoeuvring.

The **intelligent BMW xDrive all-wheel drive system** adapts perfectly to even the most challenging road surface conditions, ensuring optimal traction at all times. xDrive and Dynamic Stability Control (DSC) ensure that the BMW remains safe and stable. Controlled via the DSC sensor system, xDrive flexibly and quickly distributes drive power between the axles in order to prevent oversteer or understeer on bends, thereby ensuring

outstanding directional stability. Moreover, it guarantees a rapid, safe acceleration even on slippery or steep stretches. In critical road conditions, the DSC doesn't need to intervene as much. BMW xDrive thus combines all the advantages of an all-wheel drive system – traction, directional stability and driving safety – with classic BMW agility.

The **sporty body** has a particularly stiff construction, for optimum driving dynamics. This increases steering precision and agility. The front and rear sections include highly effective deformation zones. Should the car ever be involved in a collision, the body converts a large part of the impact energy into deformation.

The **eight-speed Steptronic sport transmission** adapts to your individual style of driving. The spectrum ranges from comfortable cruising to very dynamic driving. In addition to automatic gear selection you can also change gears manually whenever you want to, using either the shortened selector lever or the gearshift paddles on the Sport leather steering wheel.

Driving Experience Control gives you a choice between COMFORT mode for standard engine and transmission settings, ECO PRO mode for maximum efficiency, or SPORT mode for even more dynamic performance. The frugal ECO PRO mode intelligently adapts the accelerator and transmission response and the heating/air

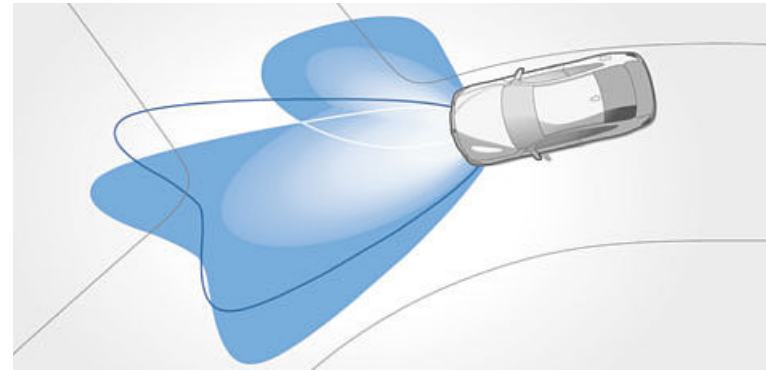
conditioning strategy to lower fuel consumption by up to 20 per cent. The coasting function (only with eight-speed Steptronic transmission) as well as the Route-Ahead Assistant (only with Navigation System Professional) and ECO PRO Route (only with Navigation System Business or Professional) enable further fuel savings.

The BMW intelligent lightweight construction concept involves deploying the right material in the right place, because every material has its specific strengths. This philosophy, also called **BMW EfficientLightweight**, is an integral part of BMW EfficientDynamics today, and included as standard in every BMW.

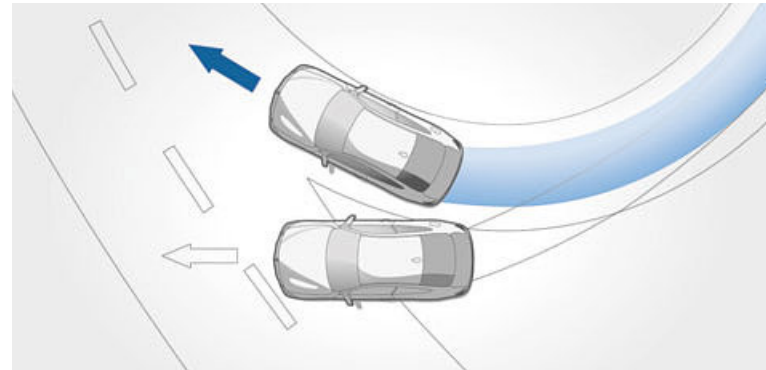
MORE SAFETY, MORE DRIVING PLEASURE.

The BMW 4 Series Convertible and the BMW 4 Series Coupé feature advanced technologies on which you can always rely. Superior driving characteristics and innovative equipment come as standard. As a driver, you will be aided by state-of-the-art technology able to give you maximum support in any situation, making you feel safe no matter what condition the roads are in.

➔ www.bmw.com/4seriesconvertible
➔ www.bmw.com/4seriescoupe



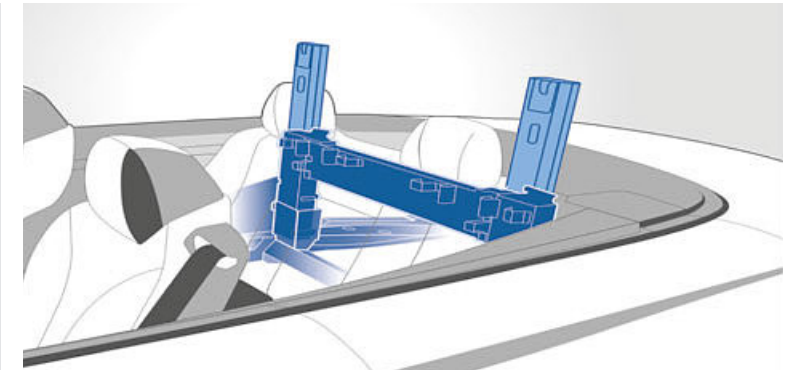
□ **Adaptive Headlights** with variable light distribution for city and motorway driving, including cornering lights and bi-xenon technology, ensure optimum road illumination. When driving at night, the swivelling headlights follow your steering wheel movements, allowing you to see further into the bend. The cornering lights improve close-range visibility. They become active automatically, even when the car is standing, as soon as the indicator is activated or the steering wheel turned. In this way, Adaptive Headlights make for enhanced road illumination in every situation and increase active driving safety.



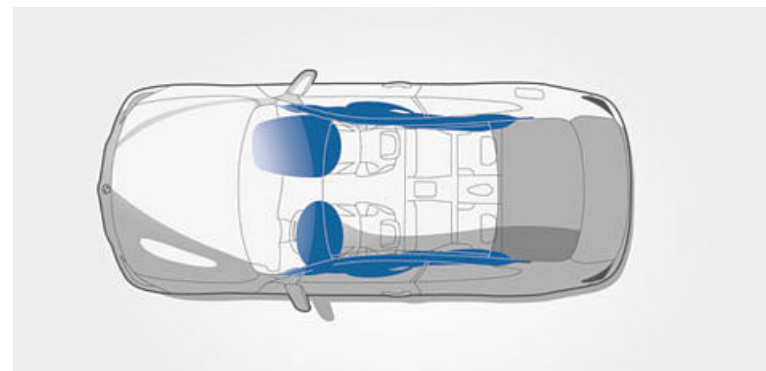
■ The **Dynamic Stability Control (DSC)** with extended functionality stabilises the vehicle as soon as any skidding motion is detected. Its extended functionality includes Cornering Brake Control (CBC), the hill-start and braking assistant, brake drying and braking readiness. For even more athletic driving, the Dynamic Traction Control (DTC) function allows increased wheel slip.



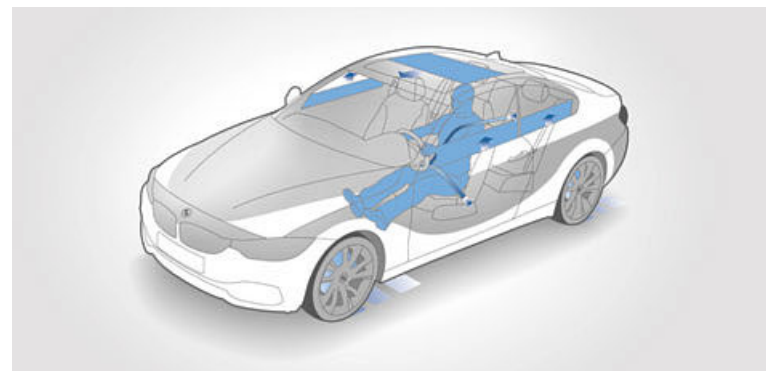
■ **BMW restraint system** for driver and front passenger: this combination of three-point seatbelt, belt tensioner and belt force limiter enables optimised restraint in the event of a collision. To ensure correct belt application on the rear seats, the belt latches are coded.



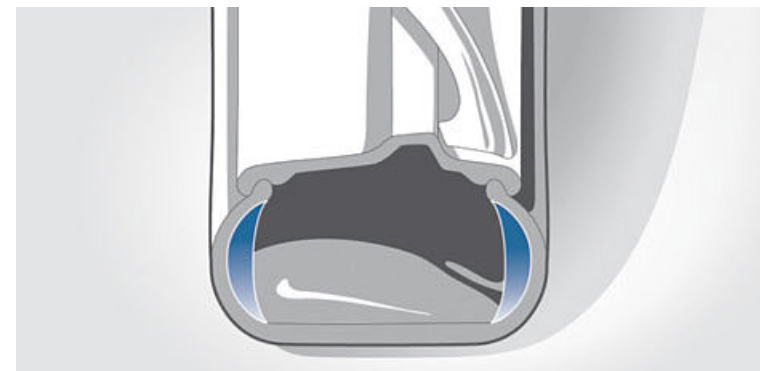
■ **Roll-over protection system, fully retracted**, increases passive safety in the BMW 4 Series Convertible. If the vehicle should overturn, the automatically deployed roll-over bars together with the reinforced windscreen frame protect the vehicle occupants.



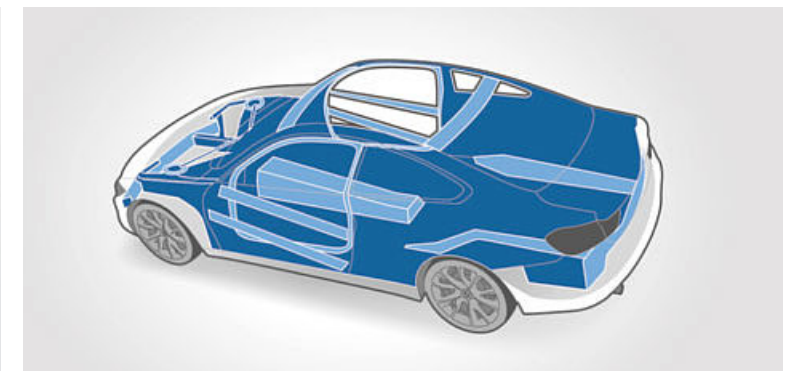
■ The **Airbags** for driver and front passenger, as well as the side airbags integrated into the front seat backrests, are integral elements of the well-interconnected safety components of each BMW and offer targeted protection in case of an accident.



□ **Active Protection** is the BMW ConnectedDrive preventive passenger protection system. Active Protection warns the driver if it detects signs of tiredness, safety belts are pretensioned in critical situations, electric seats are returned to upright positions and the windows and sliding roof are closed. After an accident occurs, the brakes are automatically applied until the car reaches a standstill.



□ **Runflat tyres** feature reinforced side walls that prevent them from loosening from the rim if the air pressure drops, making it possible to continue driving to the nearest repair shop.
■ The **tyre pressure monitor** warns the driver of any loss of pressure, using sensors to assess the air pressure and temperature.



■ **Occupant cell:** thanks to special support paths, node connections and the deliberate use of high-strength materials, the functional body design ensures a maximum of passive safety in the event of a front, side or tail-end collision.

Optional and standard equipment vary according to country.



**DIVERSITY IN EVERY DETAIL.
EQUIPMENT FOR THE
BMW 4 SERIES CONVERTIBLE.**

- EQUIPMENT VARIATIONS FOR BASE MODEL,
LUXURY LINE, SPORT LINE AND M SPORT PACKAGE
- STANDARD AND OPTIONAL EQUIPMENT
- ORIGINAL BMW ACCESSORIES

THE BMW 4 SERIES CONVERTIBLE.



The BMW 420d Convertible in the optional Glacier Silver metallic exterior colour, with 17" light alloy wheels Star-spoke style 393 (standard on 430i/430i xDrive, 440i/440i xDrive, 425d, 430d and 435d xDrive). The BMW Individual headliner in Anthracite (not pictured) is included as standard.



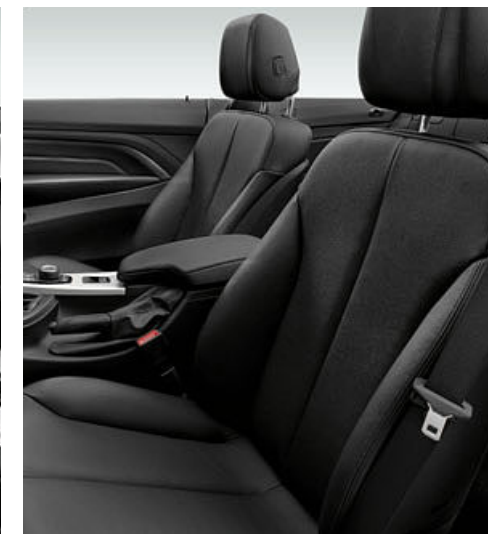
Exterior parts in satinated Aluminium, included as standard, add premium appeal to the BMW 4 Series Convertible. They include the side window trim and window recess finishers as well as the Air Breathers. Also included as standard: the BMW Individual headliner in Anthracite.



Xenon headlights with low-beam and high-beam function come as standard and also include headlight washer system, LED accent light, automatic headlight beam range control and four LED light rings that act as parking lights, side lights and daytime driving lights. Foglights in the front apron are included as standard and increase safety in bad visibility.



The cockpit with its centre console inclined towards the driver communicates typical BMW driver orientation. Standard equipment includes the Radio Professional, a 6.5" colour monitor, the intelligent emergency call function including hands-free equipment with USB interface and the ergonomic sport leather steering wheel with multifunction buttons.



The interior shown here features the standard Move upholstery in Anthracite and Satin Silver matt interior trim. Numerous handy storage compartments, two cup holders in the centre console, and door compartments with enough room to hold 1-litre bottles are also included as standard in the BMW 4 Series Convertible.



Depending on the engine selected, the BMW 4 Series Convertible comes with 17" light alloy wheels Star-spoke style 393 (428i/428i xDrive, 435i/435i xDrive, 425d, 430d and 435d xDrive) or 17" light alloy wheels Star-spoke style 394 (420i, 420d, shown here) as standard.

THE BMW 4 SERIES CONVERTIBLE WITH LUXURY LINE.

Luxury Line interior equipment features:

- Door sill finishers in aluminium with "BMW" lettering
- Saddle Brown Dakota leather upholstery with exclusive stitching, alternatively Veneto Beige Dakota leather upholstery with exclusive stitching; other upholstery options available
- Car key with Pearl-Gloss Chrome detailing
- Air conditioning and radio control unit with Pearl-Gloss Chrome detailing
- Seat heating for driver and front passenger
- Centre console trim in high-gloss Black with exclusive chrome detailing
- Finition Anthracite fine-wood trim with Pearl-Gloss Chrome accent line
- Finely Brushed Aluminium interior trim with high-gloss Black accent line; other interior trims available
- Orange/red or white variable Ambient light
- Lights package
- 2-zone automatic air conditioning with extended features

Luxury Line exterior equipment features:

- BMW kidney grille featuring eleven slats with high-gloss Chrome fronts
- Front bumper with specific design elements in high-gloss Chrome
- 18" light alloy wheels Multi-spoke style 416
- 19" light alloy wheels Multi-spoke style 399 with mixed tyres; other wheels available
- "Luxury Line" lettering on the side
- Air Breather in high-gloss Chrome, alternatively in body colour
- Side window frames and window recess finishers in high-gloss Chrome
- Rear bumper with specific design elements in high-gloss Chrome
- Tailpipe trim in high-gloss Chrome

BMW Individual:

The Luxury Line can be perfectly complemented with equipment from the BMW Individual range (see page 66/67).



The BMW 430i Convertible with Luxury Line in the optional Mineral White metallic exterior colour.



- Saddle Brown Dakota leather upholstery for the seats combined with the instrument panel bottom in Saddle Brown provides a sophisticated ambience in the interior.



- "Luxury Line" lettering on the side.



- 18" light alloy wheels Multi-spoke style 416, 8J x 18 with 225/45 R18 tyres.



- 19" light alloy wheels Multi-spoke style 399 with mixed runflat tyres, 8 J x 19, 225/40 R 19 tyres at the front, 8.5 J x 19, 255/35 R 19 tyres at the rear.

THE BMW 4 SERIES CONVERTIBLE WITH SPORT LINE.

Sport Line interior equipment features:

- Door sill finishers in aluminium with "BMW" lettering
- Sport seats in Coral Red Dakota leather with black highlights, alternatively sport seats in Black Dakota leather with red highlights; other upholstery options available
- Sport leather steering wheel with red contrast stitching, alternatively available with black stitching
- Car key with red detailing
- Instrument cluster featuring speedometer and rev counter with chronoscales and contrast rings in red
- Air conditioning and radio control unit with Chrome detailing
- Centre console trim in high-gloss Black
- Seat heating for driver and front passenger
- High-gloss Black interior trim with matt Coral Red accent line
- Finely Brushed Aluminium interior trim with high-gloss Black accent line; other interior trims available
- Orange/red or white variable Ambient light
- Driving Experience Control with additional SPORT+ mode
- Lights package
- 2-zone automatic air conditioning with extended features

Sport Line exterior equipment features:

- BMW kidney grille featuring nine exclusively designed slats with high-gloss Black fronts
- Front bumper with specific design elements in high-gloss Black
- 18" light alloy wheels Double-spoke style 397 in bi-colour Ferric Grey
- 19" light alloy wheels Star-spoke style 407 bi-colour with mixed tyres; other wheels available
- "Sport Line" lettering on the side
- Exterior mirror caps in high-gloss Black or alternatively in body colour
- Air Breather in high-gloss Black or alternatively in body colour
- Side window frames and window recess finishers in matt Black
- Rear bumper with specific design elements in high-gloss Black
- Tailpipe trim in Black Chrome

BMW Individual:

The Sport Line can be perfectly complemented with equipment from the BMW Individual range (see page 66/67).



The BMW 440i Convertible with Sport Line in the optional Mineral Grey metallic exterior colour.



■ The Sport seats for the driver and front passenger provide outstanding support. The Dakota leather upholstery in Coral Red, in combination with the instrument panel bottom in Coral Red, underscores the sporty character of this Line.

■ Door sill finishers in Aluminium with "BMW" lettering.

■ 18" light alloy wheels Double-spoke style 397 in bi-colour Ferric Grey, burnished, with runflat tyres, 8 J x 18, 225/45 R 18 tyres.

□ 19" light alloy wheels Star-spoke style 407 bi-colour with mixed runflat tyres, 8 J x 19, 225/40 R 19 tyres at the front, 8.5 J x 19, 255/35 R 19 tyres at the rear.

All accent lines are continued on the doors and in the rear of the cabin. Optional and standard equipment vary according to country.

THE BMW 4 SERIES CONVERTIBLE WITH M SPORT PACKAGE.

M Sport package interior equipment features:

- M door sill finishers and M driver's footrest¹
- Sport seats for driver and front passenger in Black Dakota leather with blue highlights and M piping
- Sport seats for driver and front passenger in Saddle Brown Dakota leather; other upholstery options available
- Seat heating for driver and front passenger
- M leather steering wheel with multifunction buttons
- Instrument cluster featuring speedometer and rev counter with chronoscales and contrast rings in red
- Air conditioning and radio control unit with Chrome detailing
- Centre console trim in high-gloss Black
- Aluminium Hexagon interior trim with matt Blue accent line or Finely Brushed Aluminium interior trim with high-gloss Black accent line; other interior trims available
- Shortened gear lever (only in conjunction with six-speed manual transmission) with "M" logo
- Driving Experience Control with additional SPORT+ mode
- Orange/red or white variable Ambient light
- Car key with blue detailing
- Lights package
- 2-zone automatic air conditioning with extended features

M Sport package exterior equipment features:

- M Aerodynamics package with front apron, side sills and rear apron with diffuser insert in Dark Shadow metallic
- BMW kidney grille featuring nine exclusively designed slats with high-gloss Black fronts
- 18" M light alloy wheels Star-spoke style 400 M with mixed tyres
- 18" M light alloy wheels Double-spoke style 441 M in Ferric Grey metallic, 19" M light alloy wheels Double-spoke style 442 M with mixed tyres, 19" M light alloy wheels Double-spoke style 442 M in bi-colour Orbit Grey metallic or 19" M light alloy wheels Star-spoke style 403 M with mixed tyres
- M Sport suspension² or standard suspension
- Adaptive suspension
- M Sport brakes
- BMW Individual High-Gloss Shadow Line
- "M" logo on the side
- Tailpipe trim in High-Gloss Chrome
- Exclusive Estoril Blue metallic paint finish; other exterior colours available
- Air Breather in high-gloss Black, in satinated Aluminium or in body colour

BMW Individual:

The M Sport package can be perfectly complemented with equipment from the BMW Individual range (see page 66/67).



The BMW 440i Convertible with M Sport package in the optional and exclusive Estoril Blue metallic exterior colour with the optional 19" M light alloy wheels Double-spoke style 442 M in bi-colour Ferric Grey.



■ The sport seats in Dakota leather with Blue contrast stitching create a powerful look in the interior.

■ Sporting appeal: door sill finishers in Aluminium with "M" lettering.

■ 18" M light alloy wheels Star-spoke style 400 M with mixed tyres, 8 J x 18, 225/45 R 18 tyres at the front, 8.5 J x 18, 255/40 R 18 tyres at the rear.

□ 19" M light alloy wheels Star-spoke style 403 M in bi-colour Ferric Grey, burnished, with mixed tyres, 8 J x 19, 225/40 R 19 tyres at the front, 8.5 J x 19, 255/35 R 19 tyres at the rear.

¹ M driver's footrest not available in combination with Dakota leather Veneto Beige.

² M Sport suspension not available for models with xDrive.

All accent lines are continued on the doors and in the rear of the cabin. Optional and standard equipment vary according to country.

BMW 4 Series Convertible Standard / Optional equipment.



■ **Retractable hardtop** open and closes quickly and automatically, even while driving at speeds of up to 18km/h. The hardtop's three segments all disappear in the roof box. The hardtop ensures all-year-round usability, improved theft and damage protection, and provides excellent soundproofing even at high speeds.



□ **Through-loading system.** The wide through-loading aperture significantly increases luggage capacity and makes it possible to transport longer items. If only the centre part of the cover is removed, long items can be allowed to protrude without affecting usability of the rear seats.



■ **Comfort loading function.** This function makes it easier to access the luggage compartment with the top down. At the press of a button, a hydraulic mechanism takes just a few seconds to move the roof package including the boot lid upwards, for significantly improved access to the entire luggage compartment.



□ The **Wind deflector** provides the driver and front passenger with effective protection from draughts at neck and shoulder-height, even when travelling at high speeds. When it is not needed, the collapsible sides can simply be folded together for easy and compact storage.
 ■ **Storage compartment for wind deflector** behind the rear backrest accommodates the folded wind deflector. Easy to reach, with optimised depth so as not to limit luggage capacity.



■ **Convertible roof switch** on the centre console opens or closes the hardtop when gently pulled or pressed.



□ **Neck warmer** ensures superlative comfort by keeping the head and shoulder area pleasantly warm. When the top is down, the warm-air system integrated into the front seats is automatically regulated as a function of speed and outside temperature. In addition, occupants can select one of three temperature levels.



■ **Roll-over protection system,** fully retracted, increases the vehicle's passive safety. If the vehicle should overturn, the automatically deployed roll-over bars together with the reinforced windscreen frame protect the vehicle occupants.



■ **LED light in the headliner.** In the centre of the headliner is an integrated LED light for use by the rear seat occupants.

Original BMW Accessories.*



20" light alloy wheels Double-spoke style 405 M; bicycle/e-bike holder for the trailer tow hitch.



Luxury textile footmats, precise fit, dirt-repellent. Luxury edition with deep black mat and "BMW" lettering in the metal inlay.



Snap-in adapter for using the telephone and listening to music.



Luggage compartment floor mat, Black/Beige anti-skid mat made of durable plastic, precise fit.



Luxury vehicle key pouch, with a case made from fine leather, for the vehicle key of your BMW 4 Series. Also available in other Line colours.



Luxury handbrake lever handle with stylish accent provided by central leather insert. Tailor-made for the BMW 4 Series Convertible.



BMW Junior Seat 2/3, available in two colourways.

A BMW always delivers a special drive – and Original BMW Accessories make the experience better still. Combining great ideas, immaculate design and sheer practicality to create innovative solutions, Original BMW Accessories are available in many categories: exterior, interior, communications & information and transport & luggage compartment solutions. Your BMW partner will be pleased to advise you on the complete range of Original BMW Accessories and provide you with a special accessories catalogue. For further information, please visit www.bmw.com/accessories

* May not be available in all countries. Please consult your BMW partner.

Optional and standard equipment vary according to country.

■ Standard equipment □ Optional equipment



Sport
Line

**ATHLETICISM THE WAY YOU LIKE IT.
EQUIPMENT FOR THE
BMW 4 SERIES COUPÉ.**

- EQUIPMENT VARIATIONS FOR BASE MODEL,
LUXURY LINE, SPORT LINE AND M SPORT PACKAGE
- STANDARD AND OPTIONAL EQUIPMENT
- ORIGINAL BMW ACCESSORIES

THE BMW 4 SERIES COUPÉ.



The BMW 418d Coupé with the optional Glacier Silver metallic paint finish. Photo shows the optional 18" light alloy wheels V-spoke style 398.



The side window trim and window recess finishers as well as the Air Breathers come in matt Black, emphasising the sporty personality of the BMW 4 Series Coupé.



Xenon headlights with low-beam and high-beam function come as standard and also include headlight washer system, LED accent light, automatic headlight beam range control and four LED light rings that act as parking lights, side lights and daytime driving lights. Foglights in the front apron are included as standard and increase safety in bad visibility.



The cockpit with its centre console inclined towards the driver communicates typical BMW driver orientation. Standard equipment includes the Radio Professional, a 6.5" colour monitor, the intelligent emergency call function including hands-free equipment with USB interface and the ergonomic sport leather steering wheel with multifunction buttons.



The interior shown here features the standard Move upholstery in Anthracite and Satin Silver matt interior trim. Numerous handy storage compartments, two cup holders in the centre console, and door compartments with enough room to hold 1-litre bottles are also included as standard in the BMW 4 Series Coupé.



Depending on the engine selected, the BMW 4 Series Coupé comes with 17" light alloy wheels Star-spoke style 393 (430i/430i xDrive, 440i/440i xDrive, 425d, 430d/430d xDrive and 435d xDrive) or 17" light alloy wheels Star-spoke style 394 (420i/420i xDrive, 418d and 420d/420d xDrive, shown here) as standard.

THE BMW 4 SERIES COUPÉ WITH SPORT LINE.

Sport Line interior equipment features:

- Door sill finishers in aluminium with "BMW" lettering
- Sport seats in Track cloth Anthracite with red or grey highlights
- Sport seats in Black Dakota leather with red highlights; other upholstery options available
- Sport leather steering wheel with red contrast stitching, alternatively available with black stitching
- Car key with red detailing
- Instrument cluster featuring speedometer and rev counter with chronoscales and contrast rings in red
- Air conditioning and radio control unit with Chrome detailing
- Centre console trim in high-gloss Black
- High-gloss Black interior trim with matt Coral Red accent line
- Finely Brushed Aluminium interior trim with high-gloss Black accent line; other interior trims available
- Orange/red or white variable Ambient light
- Driving Experience Control with additional SPORT+ mode
- Lights package
- 2-zone automatic air conditioning with extended features

Sport Line exterior equipment:

- BMW kidney grille with nine exclusively designed vertical slats with front sides in Black high-gloss
- Front bumper with specific design elements in Black high-gloss
- 18" light alloy wheels Double-spoke style 397 in Bicolour Ferric Grey
- 19" light alloy wheels Star-spoke style 407 in Bicolour with mixed tyres; other wheels available
- "Sport Line" designation on the side
- Mirror caps in body colour, alternatively in Black high-gloss
- Air Breather in Black high-gloss, alternatively in body colour
- Side window surrounds and window recess finisher in Black matt
- Rear bumper with specific design elements in Black high-gloss
- Tailpipe trim strip in Black, chrome-plated

BMW Individual:

The Sport Line can be perfectly complemented with equipment from the BMW Individual range (see page 66/67).



The BMW 440i Coupé with Sport Line in the optional Mineral Grey metallic exterior colour.



■ The Sport seats for the driver and front passenger provide outstanding support. The optional Dakota leather upholstery in Coral Red with Black accents, in combination with the instrument panel bottom in Coral Red, underscores the sporty character of this Line.



■ "Sport Line" lettering on the side.



■ 18" light alloy wheels Double-spoke style 397 in Bicolour Ferric Grey, gloss-lathed, 8J x 18, with 225/45 R18 tyres.



□ 19" light alloy wheels Star-spoke style 407 bi-colour with mixed runflat tyres, 8 J x 19, 225/40 R 19 tyres at the front, 8.5 J x 19, 255/35 R 19 tyres at the rear.

THE BMW 4 SERIES COUPÉ WITH LUXURY LINE.

Luxury Line interior equipment features:

- Door sill finishers in aluminium with "BMW" lettering
- Saddle Brown Dakota leather upholstery with exclusive stitching, alternatively Veneto Beige Dakota leather upholstery with exclusive stitching; other upholstery options available
- Seat heating for driver and front passenger
- Car key with Pearl-Gloss Chrome detailing
- Air conditioning and radio control unit with Pearl-Gloss Chrome detailing
- Centre console trim in high-gloss Black with Pearl-Gloss Chrome detailing
- Finition Anthracite fine-wood trim with Pearl-Gloss Chrome accent line
- Burl Walnut fine-wood trim with Pearl-Gloss Chrome accent line; other interior trims available
- Orange/red or white variable Ambient light
- B-pillar illumination
- Lights package
- 2-zone automatic air conditioning with extended features

Luxury Line exterior equipment features:

- BMW kidney grille featuring eleven slats with high-gloss Chrome fronts
- Front bumper with specific design elements in high-gloss Chrome
- 18" light alloy wheels Multi-spoke style 416
- 19" light alloy wheels Multi-spoke style 399 with mixed tyres; other wheels available
- "Luxury Line" lettering on the side
- Air Breather in high-gloss Chrome, alternatively in body colour
- Side window frames and window recess finishers in high-gloss Chrome
- Rear bumper with specific design elements in high-gloss Chrome
- Tailpipe trim in high-gloss Chrome

BMW Individual:

The Luxury Line can be perfectly complemented with equipment from the BMW Individual range (see page 66/67).



The BMW 430i Coupé with Luxury Line in the optional Imperial Blue metallic exterior colour.



■ Saddle Brown Dakota leather upholstery for the seats combined with the instrument panel bottom in Saddle Brown provides a sophisticated ambience in the interior.



■ Door sill finishers in Aluminium with "BMW" lettering.



■ 18" light alloy wheels Multi-spoke style 416, 8 J x 18 with 225/45 R18 tyres.



□ 19" light alloy wheels Multi-spoke style 399 with mixed runflat tyres, 8 J x 19, 225/40 R 19 tyres at the front, 8.5 J x 19, 255/35 R 19 tyres at the rear.

All accent lines are continued on the doors and in the rear of the cabin. Optional and standard equipment vary according to country.

THE BMW 4 SERIES COUPÉ WITH M SPORT PACKAGE.

M Sport package interior equipment features:

- M door sill finishers and M driver's footrest
- Sport seats for driver and front passenger in Hexagon Anthracite cloth/Alcantara combination with exclusive M looks
- Sport seats for driver and front passenger in Saddle Brown Dakota leather; other upholstery options available
- M leather steering wheel with multifunction buttons
- Instrument cluster featuring speedometer and rev counter with chronoscales and contrast rings in red
- Air conditioning and radio control unit with Chrome detailing
- Centre console trim in high-gloss Black
- Aluminium Hexagon interior trim with matt Blue accent line or Finely Brushed Aluminium interior trim with high-gloss Black accent line; other interior trims available
- Shortened gear lever (only in conjunction with six-speed manual transmission) with "M" logo
- Driving Experience Control with additional SPORT+ mode
- Orange/red or white variable Ambient light
- Car key with blue detailing
- Lights package
- 2-zone automatic air conditioning with extended features
- BMW Individual headliner in Anthracite

M Sport package exterior equipment:

- M Aerodynamics package with front apron, side skirts and rear apron with diffuser insert in Dark Shadow metallic
- BMW kidney grille with nine exclusively designed vertical slats with front sides in Black high-gloss
- 18" M light alloy wheels Star-spoke style 400 M with mixed tyres
- 18" M light alloy wheels Double-spoke style 441 M Ferric Grey metallic, 19" M light alloy wheels Double-spoke style 442 M with mixed tyres, 19" M light alloy wheels Double-spoke style 442 M Bicolour Orbit Grey metallic or 19" M light alloy wheels Star-spoke style 403 M with mixed tyres
- M Sport suspension², alternatively Standard running gear
- Adaptive M suspension
- M Sport brake
- BMW Individual high-gloss Shadow Line
- M designation on the sides
- Exterior mirror caps in body colour
- Tailpipe trim strip in Chrome high-gloss
- Exclusive paintwork in Estoril Blue metallic; other paintworks available
- Air Breather in Black high-gloss, alternatively in body colour or in Aluminium satinated

BMW Individual:

The M Sport package can be perfectly complemented with equipment from the BMW Individual range (see page 66/67).



The BMW 440i Coupé with M Sport package in the optional and exclusive Estoril Blue metallic exterior colour with the optional 19" M light alloy wheels Double-spoke style 442 M in Bicolour Ferric Grey.



■ The sport seats with the Hexagon Anthracite cloth/Alcantara combination lend the interior a powerful look.



■ Sporting appeal: door sill finishers in Aluminium with "M" lettering.



■ 18" M light alloy wheels Star-spoke style 400 M with mixed tyres, 8 J x 18, 225/45 R 18 tyres at the front, 8.5 J x 18, 255/40 R 18 tyres at the rear.



□ 19" M light alloy wheels Star-spoke style 403 M with mixed tyres, Bicolour Ferric Grey, gloss-lathed, front 8 J x 19 with 225/40 R19 tyres, rear 8.5 J x 19 with 255/35 R19 tyres.

¹ M driver's footrest not available in combination with Dakota leather Veneto Beige.

² M Sport suspension not available for models with xDrive.

All accent lines are continued on the doors and in the rear of the cabin. Optional and standard equipment vary according to country.

BMW 4 Series Coupé standard / optional equipment.



■ **Individual rear seats** offer perfect lateral support and lots of headroom, thanks to their low seating position, for supreme comfort on the rear seats. The headrests integrated into the rear backrest enhance both seating comfort and safety for rear-seat passengers.



■ **B-pillar with high-gloss Black finish and Hofmeister kink** reflect hallmark BMW elegance and design.
 □ The **Sun protection glazing** for the rear window and tinted rear side windows reduces unwanted warming of the interior.



□ **Through-loading system** includes 40/20/40-split rear backrest for added transport flexibility and a more individual seat and luggage compartment configuration, central armrest and two cup holders.

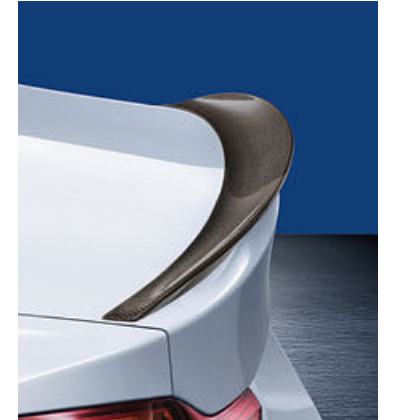


□ **Sunblind** for rear window, electric, deflects intense sunlight and provides effective protection from prying eyes.



■ **Automatic seatbelt handover** moves the seatbelts from the B-pillar to within the driver's and front passenger's reach as soon as the car key has been recognised and the doors have been closed.

BMW M Performance Accessories.

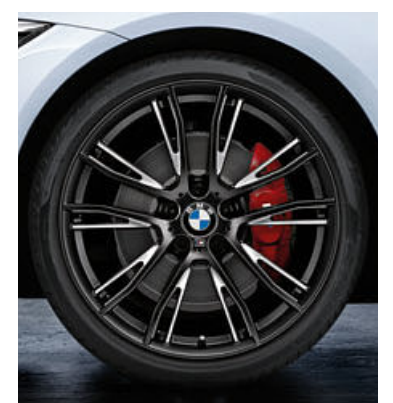


BMW M Performance rear spoiler in carbon.

BMW M Performance 20" light alloy wheels Double-spoke style 405 M bi-colour; BMW M Performance front grille, black; BMW M Performance wing mirror caps in carbon; BMW M Performance accent stripes, black/silver; BMW M Performance side skirt decals; BMW M Performance front splitter in carbon.



BMW M Performance silencer system with chrome tailpipes; BMW M Performance rear diffuser.



BMW M Performance 20" light alloy wheels 624 M bi-colour.



BMW M Performance steering wheel II Alcantara with carbon trim and race display.



BMW M Performance carbon interior trim with Alcantara.



BMW M Performance centre console gearshift lever trim in carbon and Alcantara; BMW M Performance carbon ring for centre console.

Choosing a BMW means choosing sporting performance, outstanding driving dynamics and innovative technology, because these are the principles that we're not prepared to compromise on – principles that reach their full expression in the BMW M Performance Parts range. A multitude of technical and visual components in the fields of aerodynamics, chassis, drivetrain and cockpit serve one consistent aim: making the fascination of supreme dynamic performance even more compelling. BMW M Performance Parts have been developed for people who are enthusiastic about top engineering performance and who want to give visible expression to this enthusiasm. Your BMW Service Partner will be happy to advise you on the complete range of BMW M Performance Parts and provide you with a dedicated catalogue. For further information please visit

➔ www.bmw.com/performance

Optional and standard equipment vary according to country.

EXTERIOR COLOURS.



■ Non-metallic 668 Black



□ Metallic B39 Mineral Grey¹



□ Metallic A83 Glacier Silver¹



□ Metallic 475 Black Sapphire¹



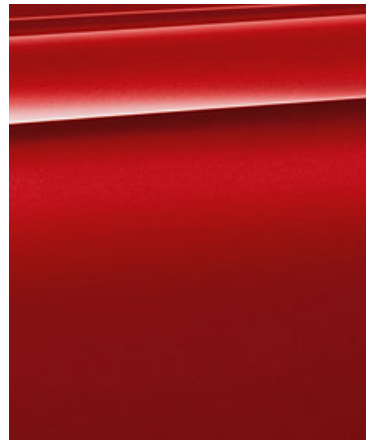
□ Non-metallic 300 Alpine White²



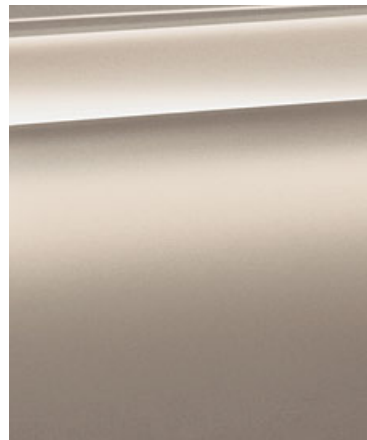
□ Metallic A96 Mineral White



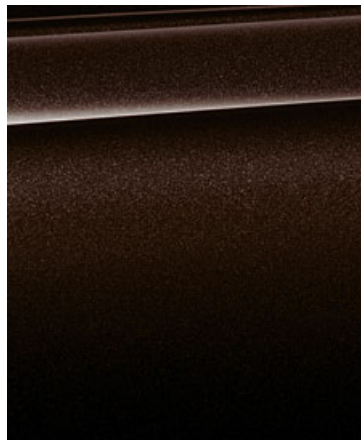
□ Metallic B38 Midnight Blue



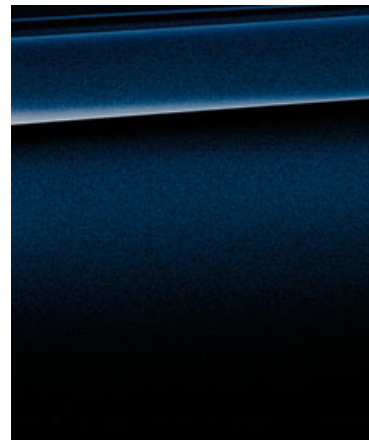
□ Metallic A75 Melbourne Red¹



□ Metallic A92 Orion Silver

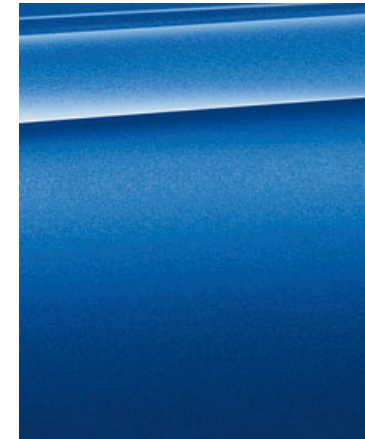


□ Metallic B53 Sparkling Brown



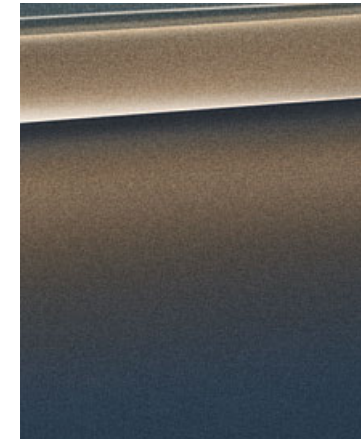
□ Metallic A89 Imperial Blue Brilliant Effect

M SPORT PACKAGE.

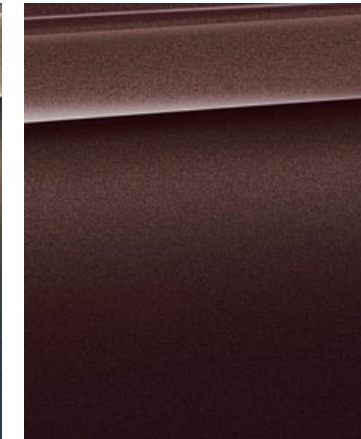


□ Metallic B45 Estoril Blue³

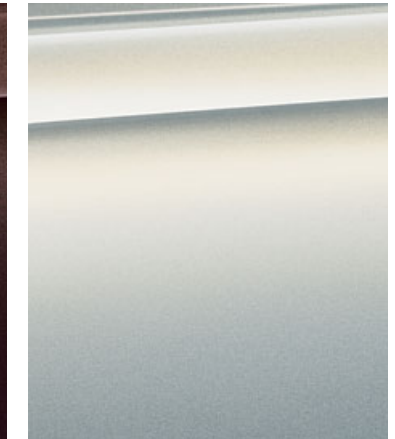
BMW INDIVIDUAL.



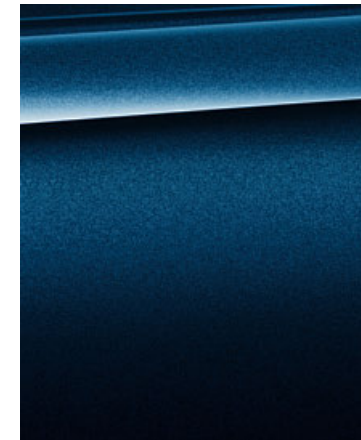
□ BMW Individual X08 Champagne Quartz metallic¹



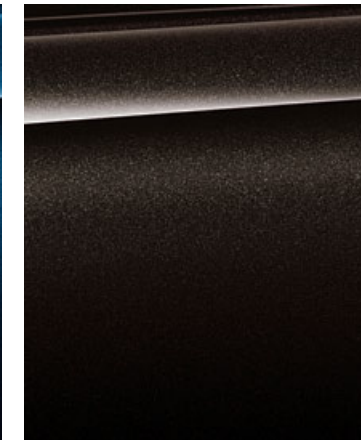
□ BMW Individual X12 Smoky Topaz metallic¹



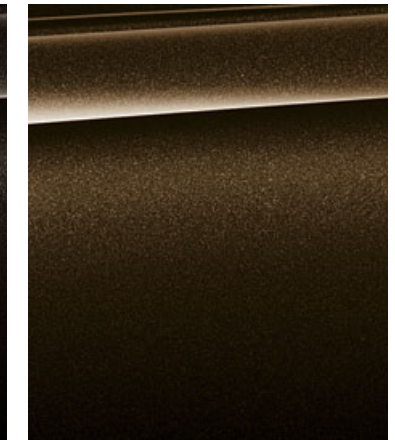
□ BMW Individual 490 Moonstone metallic¹



□ BMW Individual X10 Tanzanite Blue metallic¹



□ BMW Individual X02 Citrine Black metallic¹



□ BMW Individual 490 Pyrite Brown metallic¹

¹ Also optionally available with the M Sport package.

² Standard for the M Sport package.

³ Exclusively available for the M Sport package.

Optional and standard equipment vary according to country.

These pages show the colours and materials available for the BMW 4 Series Convertible and BMW 4 Series Coupé. Use them to identify your favourite colours, or compare various combinations. These colour samples are meant to give you a first impression of paints and materials. Experience has shown, however, that printed versions of paint, upholstery, and interior trim colours cannot always faithfully reproduce the colour appearance of the originals. We recommend therefore that you consult your BMW dealer who will be happy to show you original samples and assist with special requests.

BMW UPHOLSTERY COLOURS CONVERTIBLE.

LEATHER.

Available with

- Base model
- Luxury Line
- Sport Line
- M Sport package

Available with

- Base model
- Luxury Line
- Sport Line
- M Sport package

Available with

- Base model
- Luxury Line
- Sport Line
- M Sport package

Available with

- Base model
- Luxury Line
- Sport Line
- M Sport package

Available with

- Sport Line
- M Sport package

Available with

- Sport Line

Available with

- Luxury Line
- Sport Line

Available with

- Luxury Line
- Sport Line

Available with

- Luxury Line
- Sport Line

Available with

- Sport Line
- M Sport package

Available with

- Luxury Line

Available with

- M Sport package

Dakota leather
LCSW Black

Dakota leather
LCDF Veneto Beige

Dakota leather
LCV1 Veneto Beige with interior colour in Black

Dakota leather
LCOM Oyster, Oyster dark highlights, with Black interior colour

Dakota leather
LCL5 Coral Red, Black highlights

Dakota leather
LCL3 Black, Red highlights

Dakota leather
LCLZ Black with Exclusive stitching

Dakota leather
LCLY Veneto Beige with Exclusive stitching

Dakota leather
LCV2 Veneto Beige with exclusive stitching and Black interior colour

Dakota leather
LCD3 Saddle Brown, lower part of the instrument panel in Black

Dakota leather
LCLX Saddle Brown with Exclusive stitching, instrument panel bottom in Saddle Brown

Dakota leather
LCNL Black, Blue highlights

CLOTH.

Available with

- Base model

BMW INDIVIDUAL LEATHER.

Available with

- Base model
- Luxury Line
- Sport Line
- M Sport package

Available with

- Base model
- Luxury Line
- Sport Line
- M Sport package

Available with

- Base model
- Luxury Line
- Sport Line
- M Sport package

Available with

- Base model
- Luxury Line
- Sport Line
- M Sport package

Available with

- Base model
- Luxury Line
- Sport Line
- M Sport package

Move cloth
BDAT Anthracite

BMW Individual fine-grain Merino leather
ZAOV Opal White¹

BMW Individual fine-grain Merino leather
ZAKS Cashmere Beige¹

BMW Individual fine-grain Merino leather
ZAGB Gold Brown¹

BMW Individual fine-grain Merino leather
ZAML Nutmeg¹

BMW Individual fine-grain Merino leather
ZASW Black¹

BMW INTERIOR TRIMS CONVERTIBLE.

PAINT FINISHES.

Available with

- Base model

Available with

- Sport Line

ALUMINIUM.

Available with

- Base model
- Luxury Line
- Sport Line
- M Sport package

Available with

- Base model
- Luxury Line
- Sport Line
- M Sport package

Available with

- M Sport package

Available with

- M Sport package

4CG Satin Silver matt

4LV High-gloss Black, matt Coral Red accent line

4LS Finely Brushed Aluminium, Pearl-Gloss Chrome accent line

4FT Finely Brushed Aluminium, high-gloss Black accent line

4WF Aluminium Hexagon, matt Blue accent line

4WG Aluminium Hexagon, high-gloss Black accent line

FINE-WOOD TRIMS.

Available with

- Base model
- Luxury Line
- Sport Line
- M Sport package

Available with

- Base model
- Luxury Line
- Sport Line
- M Sport package

Available with

- Luxury Line

Available with

- Luxury Line
- Sport Line
- M Sport package

BMW INDIVIDUAL INTERIOR TRIMS.

Available with

- Base model
- Luxury Line
- Sport Line
- M Sport package

Available with

- Base model
- Luxury Line
- Sport Line
- M Sport package

Available with

- Base model
- Luxury Line
- Sport Line
- M Sport package

4FU Fine-wood trim
Fineline Anthracite, Pearl-Gloss Chrome accent line

4FW Fine-wood trim Burled Walnut, Pearl-Gloss Chrome accent line

4GB Fine-wood trim Burled Walnut with inlay, Pearl-Gloss Chrome accent line

4GA Fine-wood trim Ash Grain with metal inlay, Pearl-Gloss Chrome accent line

BMW Individual interior trim
XEX Fine-wood trim Ash Grain White, Pearl-Gloss Chrome accent line

BMW Individual interior trim
XE5 Fine-wood trim Plane Auburn dark, Pearl-Gloss Chrome accent line

BMW Individual interior trim
XE7 Piano finish Black, Pearl-Gloss Chrome accent line

BMW INTERIOR COLOURS.

INTERIOR COLOURS.

Available with

- Base model
- Luxury Line
- Sport Line
- M Sport package

Available with

- Base model
- Luxury Line
- Sport Line
- M Sport package

Black

Veneto Beige

BMW INDIVIDUAL HEADLINER.

Available with

- Base model
- Luxury Line
- Sport Line
- M Sport package

BMW Individual headliner
775 Anthracite

¹ BMW Individual extended fine-grain Merino leather upholstery with contrast stitching and piping comprises front and rear seats including headrests, door trim inserts, door armrests and centre console armrest. Piping on front and rear seats and headrests in contrasting colour. Pearl-Gloss Chrome belt guide.

Optional and standard equipment vary according to country.

Please note that even normal long or short-term use can lead to unrecoverable upholstery damage. This can be caused in particular by non-colourfast clothing.

For the BMW 4 Series Convertible, Dakota leather and BMW Individual Merino leather include SunReflective Technology for the driver's seat, front passenger seat, rear seats, central armrest and door armrests.

BMW UPHOLSTERY COLOURS COUPÉ.

CLOTH.

| Available with | |
|---|--|
| <input checked="" type="checkbox"/> Base model <input type="checkbox"/> Sport Line | Move cloth BDAT Anthracite |
| <input type="checkbox"/> Base model <input checked="" type="checkbox"/> Sport Line | Track cloth BEL2 Anthracite, Red highlights |
| <input type="checkbox"/> Base model <input checked="" type="checkbox"/> Sport Line | Track cloth BEL1 Anthracite, Grey highlights |

CLOTH/LEATHER COMBINATION.

| Available with | |
|--|--|
| <input type="checkbox"/> Base model <input type="checkbox"/> Sport Line | Breeze cloth/leather combination CBOP Oyster, with Black interior colour |
| <input checked="" type="checkbox"/> M Sport package | Hexagon cloth/Alcantara combination HAAT Anthracite with M piping and contrast stitching in Royal Blue |

LEATHER.

| Available with | |
|---|--|
| <input type="checkbox"/> Base model <input checked="" type="checkbox"/> Luxury Line <input type="checkbox"/> Sport Line <input type="checkbox"/> M Sport package | Dakota leather LCSW Black |
| <input type="checkbox"/> Base model <input checked="" type="checkbox"/> Luxury Line <input type="checkbox"/> Sport Line <input type="checkbox"/> M Sport package | Dakota leather LCDF Veneto Beige |
| <input type="checkbox"/> Base model <input checked="" type="checkbox"/> Luxury Line <input type="checkbox"/> Sport Line <input type="checkbox"/> M Sport package | Dakota leather LCV1 Veneto Beige with interior colour in Black |
| <input type="checkbox"/> Base model <input checked="" type="checkbox"/> Luxury Line <input type="checkbox"/> Sport Line <input type="checkbox"/> M Sport package | Dakota leather LCOM Oyster, Oyster dark highlights, with Black interior colour |
| <input type="checkbox"/> Sport Line | Dakota leather LCL3 Black, Red highlights |
| <input type="checkbox"/> Sport Line <input type="checkbox"/> M Sport package | Dakota leather LCL5 Coral Red, Black highlights |

LEATHER.

| Available with | |
|--|--|
| <input checked="" type="checkbox"/> Luxury Line <input type="checkbox"/> Sport Line | Dakota leather LCLZ Black with Exclusive stitching |
| <input checked="" type="checkbox"/> Luxury Line <input type="checkbox"/> Sport Line | Dakota leather LCLY Veneto Beige with Exclusive stitching |
| <input checked="" type="checkbox"/> Luxury Line <input type="checkbox"/> Sport Line | Dakota leather LCV2 Veneto Beige with exclusive stitching and Black interior colour |
| <input type="checkbox"/> Sport Line <input type="checkbox"/> M Sport package | Dakota leather LCD3 Saddle Brown, lower part of the instrument panel in Black |
| <input checked="" type="checkbox"/> Luxury Line | Dakota leather LCLX Saddle Brown with Exclusive stitching, instrument panel bottom in Saddle Brown |
| <input type="checkbox"/> Modell M Sport | Leder Dakota LCNL Schwarz, Akzent Blau |

BMW INDIVIDUAL LEATHER.

| Available with | |
|--|---|
| <input type="checkbox"/> Base model <input type="checkbox"/> Luxury Line <input type="checkbox"/> Sport Line <input type="checkbox"/> M Sport package | BMW Individual fine-grain Merino leather ZAOW Opal White ¹ |
| <input type="checkbox"/> Base model <input type="checkbox"/> Luxury Line <input type="checkbox"/> Sport Line <input type="checkbox"/> M Sport package | BMW Individual fine-grain Merino leather ZAKS Cashmere Beige ¹ |
| <input type="checkbox"/> Base model <input type="checkbox"/> Luxury Line <input type="checkbox"/> Sport Line <input type="checkbox"/> M Sport package | BMW Individual fine-grain Merino leather ZAGB Gold Brown ¹ |
| <input type="checkbox"/> Base model <input type="checkbox"/> Luxury Line <input type="checkbox"/> Sport Line <input type="checkbox"/> M Sport package | BMW Individual fine-grain Merino leather ZAML Nutmeg ¹ |
| <input type="checkbox"/> Base model <input type="checkbox"/> Luxury Line <input type="checkbox"/> Sport Line <input type="checkbox"/> M Sport package | BMW Individual fine-grain Merino leather ZASW Black ¹ |

BMW INTERIOR TRIMS COUPÉ.

PAINT FINISHES.

| Available with | |
|--|--|
| <input checked="" type="checkbox"/> Base model | 4CG Satin Silver, matt |
| <input checked="" type="checkbox"/> Sport Line | 4LV High-gloss Black, matt Coral Red accent line |

ALUMINIUM.

| Available with | |
|--|--|
| <input type="checkbox"/> Base model <input checked="" type="checkbox"/> Luxury Line <input type="checkbox"/> Sport Line <input checked="" type="checkbox"/> M Sport package | 4LS Finely Brushed Aluminium, Pearl-Gloss Chrome accent line |
| <input type="checkbox"/> Base model <input checked="" type="checkbox"/> Luxury Line <input type="checkbox"/> Sport Line <input checked="" type="checkbox"/> M Sport package | 4FT Finely Brushed Aluminium, high-gloss Black accent line |
| <input checked="" type="checkbox"/> M Sport package | 4WF Aluminium Hexagon, matt Blue accent line |
| <input checked="" type="checkbox"/> M Sport package | 4WG Aluminium Hexagon, high-gloss Black accent line |

FINE-WOOD TRIMS.

| Available with | |
|---|--|
| <input type="checkbox"/> Base model <input checked="" type="checkbox"/> Luxury Line <input type="checkbox"/> Sport Line <input type="checkbox"/> M Sport package | 4FU Fine-wood trim Fineline Anthracite, Pearl-Gloss Chrome accent line |
| <input type="checkbox"/> Base model <input checked="" type="checkbox"/> Luxury Line <input type="checkbox"/> Sport Line <input type="checkbox"/> M Sport package | 4FW Fine-wood trim Burled Walnut, Pearl-Gloss Chrome accent line |
| <input type="checkbox"/> Luxury Line | 4GB Fine-wood trim Burled Walnut with inlay, Pearl-Gloss Chrome accent line |
| <input type="checkbox"/> Luxury Line <input type="checkbox"/> Sport Line <input type="checkbox"/> M Sport package | 4GA Fine-wood trim Ash Grain with metal inlay, Pearl-Gloss Chrome accent line |

BMW INDIVIDUAL INTERIOR TRIMS.

| Available with | |
|--|--|
| <input type="checkbox"/> Base model <input type="checkbox"/> Luxury Line <input type="checkbox"/> Sport Line <input type="checkbox"/> M Sport package | BMW Individual interior trim XEX Fine-wood trim Ash Grain White, Pearl-Gloss Chrome accent line |
| <input type="checkbox"/> Base model <input type="checkbox"/> Luxury Line <input type="checkbox"/> Sport Line <input type="checkbox"/> M Sport package | BMW Individual interior trim XE5 Fine-wood trim Plane Auburn dark, Pearl-Gloss Chrome accent line |
| <input type="checkbox"/> Base model <input type="checkbox"/> Luxury Line <input type="checkbox"/> Sport Line <input type="checkbox"/> M Sport package | BMW Individual interior trim XE7 Piano finish Black, Pearl-Gloss Chrome accent line |

BMW INTERIOR COLOURS.

INTERIOR COLOURS.

| Available with | |
|--|--------------|
| <input checked="" type="checkbox"/> Base model <input checked="" type="checkbox"/> Luxury Line <input checked="" type="checkbox"/> Sport Line <input checked="" type="checkbox"/> M Sport package | Black |
| <input checked="" type="checkbox"/> Base model <input checked="" type="checkbox"/> Luxury Line <input checked="" type="checkbox"/> Sport Line <input checked="" type="checkbox"/> M Sport package | Veneto Beige |

BMW INDIVIDUAL HEADLINER.

| Available with | |
|---|---|
| <input type="checkbox"/> Base model <input type="checkbox"/> Luxury Line <input type="checkbox"/> Sport Line <input checked="" type="checkbox"/> M Sport package | BMW Individual headliner 775 Anthracite |

¹ BMW Individual extended fine-grain Merino leather upholstery with contrast stitching and piping comprises front and rear seats including headrests, door trim inserts, door armrests and centre console armrest. Piping on front and rear seats and headrests in contrasting colour.

Optional and standard equipment vary according to country.

Please note that even normal long or short-term use can lead to unrecoverable upholstery damage. This can be caused in particular by non-colourfast clothing.

BMW Individual

The expression of personality.



BMW Individual paint finish
Pyrite Brown metallic.



The BMW 4 Series Convertible. Inspired by BMW Individual.

□ Driving a BMW is, in itself, a mark of character. There are those who still, however, want their vehicles to be even more individual reflections of their personality. The BMW Individual Collection and the BMW Individual Manufaktur meet these needs by opening up seemingly limitless opportunities for differentiation.

Precisely in tune with each model, the BMW Individual Collection offers a highly exclusive selection of equipment options. Fascinating paint finishes either refracting the light or with a matt effect. Leather, unique in colour and scope of application, perfected with clever contrasts and decorative stitching. Interior trims in the most exclusive fine woods, the immaculate Piano finish and the finest leather.

And yet even this can be surpassed – thanks to the BMW Individual Manufaktur. Here, there is only one goal: realising almost any customer request, even the most personal, with stylish, hand-crafted perfection.



BMW Individual fine-wood trim Ash Grain White,
with leather-covered instrument panel.



BMW Individual extended fine-grain Merino leather upholstery in Opal White with fine-wood trim Ash Grain White,
leather-covered instrument panel and Merino leather steering wheel.



Standard / Optional equipment.



□ **19" light alloy wheels Double-spoke style 401** with mixed runflat tyres, 8 J x 19, 225/40 R 19 tyres at the front, 8.5 J x 19, 255/35 R 19 tyres at the rear.



□ **18" light alloy wheels V-spoke style 398** with mixed runflat tyres, 8 J x 18, 225/45 R 18 tyres at the front, 8.5 J x 18, 255/40 R 18 tyres at the rear.



□ **18" light alloy wheels Star-spoke style 396** with runflat tyres, 8 J x 18, 225/45 R 18 tyres.



■ **17" light alloy wheels Star-spoke style 394**, 7.5 J x 17, 225/50 R 17 tyres (standard for the 418d¹, 420i/420i xDrive¹ and 420d/420d xDrive¹).



■ **17" light alloy wheels Star-spoke style 393**, 7.5 J x 17, 225/50 R 17 tyres (standard for the 430i/430i xDrive, 440i/440i xDrive, 425d, 430d/430d xDrive¹ and 435d xDrive).



□ **18" light alloy wheels Turbine style 415** with runflat tyres, 8 J x 18, 225/45 R 18 tyres.

Sport Line.



□ **19" light alloy wheels Star-spoke style 407** bi-colour with mixed runflat tyres, 8 J x 19, 225/40 R 19 tyres at the front, 8.5 x 19, 255/35 R 19 tyres at the rear.



■ **18" light alloy wheels Double-spoke style 397** in Bicolour Ferric Grey, gloss-lathed, 8J x 18, with 225/45 R18 tyres.

Luxury Line.



□ **19" light alloy wheels Multi-spoke style 399** with mixed runflat tyres, 8 J x 19, 225/40 R 19 tyres at the front, 8.5 J x 19, 255/35 R 19 tyres at the rear.



■ **18" light alloy wheels Multi-spoke style 416**, 8J x 18 with 225/45 R18 tyres.

BMW M Performance.



○ **BMW M Performance 20" light alloy wheels Double-spoke style 405 M** bi-colour, 8 J x 20, 225/35 R 20 tyres at the front, 8.5 J x 20, 255/30 R 20 tyres at the rear.



○ **BMW M Performance 20" light alloy wheels Double-spoke style 624 M** bi-colour Black matt, 8 J x 20, 225/35 R 20 tyres at the front, 8.5 J x 20, 255/30 R 20 tyres at the rear.

BMW Individual.



□ **19" BMW Individual light alloy wheels V-spoke style 626 I** with mixed runflat tyres, 8 J x 19, 225/40 R 19 tyres at the front, 8.5 J x 19, 255/35 R 19 tyres at the rear. Discreet laser-engraved BMW Individual lettering.³

M Sport package.



■ **18" M light alloy wheels Star-spoke style 400 M** with mixed tyres, 8 J x 18, 225/45 R 18 tyres at the front, 8.5 J x 18, 255/40 R 18 tyres at the rear.



□ **18" M light alloy wheels Double-spoke style 441 M** in Ferric Grey metallic with mixed tyres, front 8J x 18 with 225/45 R18 tyres, rear 8.5J x 18 with 255/40 R18 tyres. □ **M Sport brakes²** with fixed-caliper brakes in Dark Blue and "M" lettering have larger brake discs which provide enhanced braking power.



□ **19" M light alloy wheels Double-spoke style 442 M** in bi-colour Ferric Grey, burnished, with mixed tyres, 8 J x 19, 225/40 R 19 tyres at the front, 8.5 J x 19, 255/35 R 19 tyres at the rear.



□ **19" M light alloy wheels Double-spoke style 442 M** in bi-colour Orbit Grey, burnished, with mixed tyres, 8 J x 19, 225/40 R 19 tyres at the front, 8.5 J x 19, 255/35 R 19 tyres at the rear.

¹ Only available for the BMW 4 Series Coupé.

² Available in combination with wheel sizes from 18" or in conjunction with the M Sport package.

³ Not in combination with M Sport package.

Optional and standard equipment vary according to country.

Standard / Optional equipment.



- **Adaptive LED Headlights** (shown here) include accent lights, low beam and high beam function, BMW Selective Beam (anti-dazzle High-Beam Assistant), LED foglights, cornering lights, indicators, daytime running lights and Adaptive Headlights with variable light distribution for optimal illumination of the road ahead and improved visibility at night – for a more relaxed driving experience similar to daytime cruising.
- **Xenon Headlights** for low and high beam with automatic headlight range control include headlight washing system, LED accent lights as well as parking lights and daytime running lights via four LED light rings.
- **High-Beam Assistant** supports the driver at night by automatically switching to low beam when there is oncoming traffic or another car ahead. Whenever there is sufficient external lighting, for example in urban areas, the High-Beam Assistant reacts by automatically dipping the beam.
- **Headlight washing system** ensures optimum headlight brightness in all kinds of weather. When the lights are on, the headlights are automatically cleaned in parallel with the windscreen whenever the windscreen washer function is activated.



- **Dynamic Braking Lights** with flashing function are automatically activated in case of a hard stop, thus enabling traffic travelling behind to tell the difference between a light tap on the brake pedal and a hard stop – and preventing tail-end collisions.



- **LED foglights** in the front apron (included with Adaptive LED Headlights) increase safety in bad visibility.



- **BMW Individual High-Gloss Shadow Line** includes numerous trim details in high-gloss Black: front and rear side window trims, front and rear window recess finishers, Air Breathers, mirror bases and mirror triangles. (This equipment option is included with the M Sport package.)
- **Exterior equipment in satinated Aluminium**¹ comprises features such as the side window frames and/or window recess finishers and Air Breathers in satinated Aluminium. The mirror bases and mirror triangles come in matt Black.



- The **Rain sensor** automatically switches on the windscreen wipers when required and adjusts the wiper frequency to the rainfall intensity. When the light conditions require, the integrated automatic headlight activation activates the low-beam headlight.



- **Exhaust tailpipes with chrome finish:** depending on the engine there is a single tailpipe on the left; one on the left and one on the right; or a twin tailpipe on the left. Photo shows tailpipe with Black Chrome trim².



- **Trailer tow hitch** incl. trailer stability control, can be folded away electrically under the rear apron. For tow loads of up to 1,800kg, depending on the choice of engine.



- **Eight-speed Steptronic sport transmission** (shown here), incl. a sportier gear selector lever and SPORT+ mode, for even faster, precise gear changes ensuring maximum dynamic performance – supported by the shift paddles on the Sport leather steering wheel.
- The **M Sport suspension** includes a stiffer spring and damper set-up for a sportier drive.³



- The **8-speed Steptronic transmission**⁴ ensures particularly smooth gearshifts and outstanding driving comfort, thanks to fast engine speed transitions and tightly spaced gear ratios. It unites superb comfort with impressive dynamics and increased fuel efficiency.



- **Six-speed manual transmission** for a very sporty drive. Smooth, with perfect ratios and precise, short-throw gearshifts. The tight spacing of gear ratios means that you can make even more individual use of the engine's power.

Optional and standard equipment vary according to country.

¹ Standard for the BMW 4 Series Convertible.

² Only in conjunction with Sport Line.

³ Not in combination with BMW xDrive.

⁴ Standard for the 430i xDrive (BMW 4 Series Convertible and Coupé), 440i (BMW 4 Series Convertible), 440i xDrive (BMW 4 Series Convertible), 430d (BMW 4 Series Convertible and Coupé), 430d xDrive (BMW 4 Series Coupé) and 435d xDrive (BMW 4 Series Convertible and Coupé).

Standard / Optional equipment.



□ **iDrive Touch Controller**, part of the Navigation System Professional, enables intuitive and comfortable operation of the iDrive system. The touchpad integrated into the Controller facilitates the use of handwriting for inputting data such as destination addresses for the navigation system, with convenient monitoring via the Control Display.



■ **Radio Professional**, incl. fixed 6.5" LCD colour display, iDrive Controller, MP3-capable CD drive, six loudspeakers and 4 x 25 Watt output, FM/SW/MW reception as well as RDS and Traffic Programmes (TP), double tuner, electronic manual.
 □ The **DAB tuner** offers a large selection of digital radio stations, including many special-interest broadcasters, thanks to digital reception. It is also DAB+ compatible for even better reception and sound quality.



■ **Driving Experience Control incl. ECO PRO mode** offers a choice between the standard Comfort mode, the ECO PRO mode designed to maximise fuel economy, and the SPORT mode, which enables even more dynamic driving. The ECO PRO mode adapts the accelerator and transmission response as well as the heating/air conditioning strategy to the current driving situation.
 □ **Adaptive Suspension** includes dynamic damper control. Driving Experience Control can be used to select a comfortable or sporty chassis set-up.



□ **Harman Kardon Surround Sound System** incl. wordmark trim on the speaker grilles. Powerful digital amplifier with 600W (Coupé) or 515W (Convertible) output, nine channels, vehicle-specific equalizing, central speaker and 16 (Coupé) or 12 (Convertible) loudspeakers for truly outstanding sound quality.



□ The **HiFi loudspeaker system** with 205 watt amplifier output and 9 speakers evenly distributes the sound throughout the interior of the car. The 7-channel amplifier guarantees that the audio will be finely tuned for a superbly crisp sound.



□ **Navigation System Professional¹** incl. hands-free kit, with USB interface, fixed 10.2" LCD colour display with split screen function (main and assistance windows), Radio Professional with DVD drive, 20GB storage capacity for audio files and Real Time Traffic Information in conjunction with BMW Assist.* The unit is operated intuitively via the iDrive Controller with direct menu control buttons and eight functional bookmarks. Maps are displayed in 3D with satellite background images. Selected sights are shown as photorealistic images.



□ **Navigation System Business¹** with iDrive Controller comes with a built-in 6.5" LCD colour display. Route guidance is provided via an arrow or map display, along with spoken instructions. The navigation system is operated intuitively via the iDrive Controller with direct menu control buttons and functional bookmarks or via voice control.



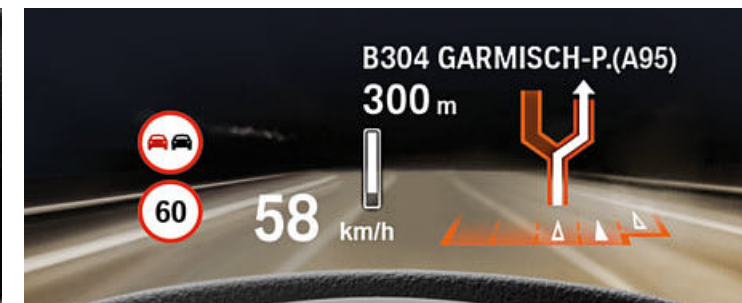
■ The **Instrument cluster** features five analogue displays – speedometer, rev counter, fuel gauge, oil temperature and fuel consumption – as well as an Info Display. The latter shows data such as the outside temperature and on-board computer functions.
 □ **Instrument cluster with extended functionality** (shown here) includes an Info Display for various functions, navigation prompts and operational feedback as well as song titles and sources from the audio system. With the ECO PRO mode activated, the instrument cluster provides graphical hints and ECO PRO tips to encourage more efficient driving.



□ **BMW Individual leather-covered instrument panel (XT1)**. Instrument panel top and upper-arm trim panels in Walknappa leather in the interior colour. Instrument panel bottom in fine-grain Merino leather in the BMW Individual upholstery colour. Contrasting seams in instrument panel top and bottom. Only in conjunction with BMW Individual fine-grain Merino leather.



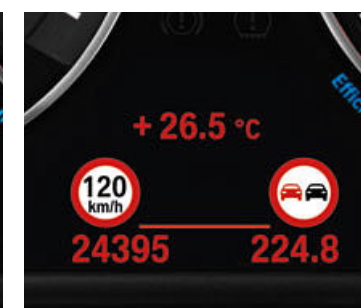
□ **BMW Individual leather-covered instrument panel (4M5)**. Instrument panel top and bottom in Walknappa leather Black. Upper-arm trim panels not leather-covered. Only in conjunction with Dakota leather.



□ **BMW Head-Up Display²**, full-colour, projects information relevant to the journey directly into the driver's field of vision, thereby allowing them to fully concentrate on driving. The display includes information such as the current speed, navigation directions, Speed Limit Info incl. no-overtaking indicator, along with telephone and entertainment lists.



■ **On-board computer** provides data on average speed, average and current fuel consumption, range and exterior temperature.
 ■ **Automatic Start/Stop function** reduces fuel consumption by automatically switching off the engine when the vehicle comes to a temporary standstill.



□ **Speed Limit Info** including the no-overtaking indicator detects current speed limits and no-overtaking signs and shows them to the driver on the Info Display in the instrument cluster.



□ **Active Cruise Control with Stop&Go function³** incl. radar-based Approach Warning and light-braking function. Provides automatic speed control up to a selected speed of 210km/h, even in typical stop-and-go situations.



□ **Driving Assistant** alerts the driver to an unintentional lane change and potential collisions and automatically applies the brakes in an emergency.

*May not be available in all countries. Please consult your BMW partner.

¹ Within the framework of BMW ConnectedDrive, in selected European countries the system automatically updates the maps for three years up to four times per year, without licence fees.

² The information in the BMW Head-Up Display is not fully visible when wearing polarised sunglasses.

Functionality shown is dependent on equipment. Further optional equipment is required for additional displays.

³ Requires eight-speed Steptronic transmission.

Optional and standard equipment vary according to country.

Standard / Optional equipment.



❑ **M leather steering wheel** including multifunction buttons, a steering wheel rim in Black Walknappa leather and more pronounced thumb rests.

■ The **Multifunction buttons** for the steering wheel can be used to operate the telephone, voice control and audio functions, as well as the cruise control.

❑ **BMW Individual fine-grain leather steering wheel** in the style of the sport leather steering wheel but with superior leather quality and a thicker rim.



■ **Automatic air conditioning with single-zone control**, including microfilter.

❑ The **Automatic air conditioning with two-zone control** (shown here for the Luxury Line), and automatic temperature control features separate controls for the driver and front passenger. It also includes Automatic Air Recirculation (AAR), an active carbon filter, a fog and solar sensor, as well as rear air vents.

■ **Sport leather steering wheel**, black, three spokes, with multifunction buttons and chrome trim. Photo shows red contrast stitching.

❑ **Variable Sport Steering** for a very direct driving experience as well as enhanced agility and parking comfort.

■ **Servotronic** supports steering by adjusting the power steering to suit the current speed.

■ **Front passenger airbag deactivation** to enable installation of a rear-facing child seat is done via a key switch on the passenger side.



❑ **Telephony with wireless charging** offers a comprehensive telephony package with Bluetooth connectivity, an NFC interface and the technical capacity for a WiFi hotspot.

■ **Hands-free system with USB port** for wireless connection of suitable Bluetooth mobile phones¹ or connection of compatible audio sources such as MP3 players via the USB port.



❑ **Lights package**, includes many additional light sources: reading lights front (for the BMW 4 Series Convertible and Coupé) and rear (only available for the BMW 4 Series Coupé), vanity mirror illumination for driver and front passenger (standard for the BMW 4 Series Convertible, LED option only available for the BMW 4 Series Coupé), front footwell lights, ambient light in the front and rear, in the door trim, exit lights in the doors and vicinity lighting integrated into the exterior door handles. (Standard for the 430i/430i xDrive, 440i/440i xDrive, 425d, 430d/430d xDrive² and 435d xDrive as well as for the Sport Line, Luxury Line and M Sport package.)



❑ **Sport seats for the Coupé** (shown above). Optimal lateral support for the driver and front passenger thanks to electric backrest width adjustment. Seat length, seat height, backrest angle and seat angle as well as thigh support are manually adjustable (standard for the 440i/440i xDrive and 435d xDrive).

❑ **Sport seats for the Convertible**. Optimal lateral support for the driver and front passenger thanks to electric backrest width adjustment. Seat length, seat height, backrest angle and seat angle can also be adjusted electrically. Manually adjustable thigh support.



■ **Interior mirror with automatic anti-glare function**; dazzle from following vehicles is automatically reduced when the amount of incident light exceeds a defined limit (standard for the Coupé).

❑ **Interior and driver-side exterior mirrors with automatic anti-dazzle function**, including fold-in function for the exterior mirrors and automatic parking function for the front passenger exterior mirror.

❑ **Alarm system** with radio remote control and anti-theft device triggers acoustic signals in the event of an attempted break-in or unauthorised transport of the vehicle, and simultaneously switches on the hazard warning lights.



■ **Front armrest** with sliding adjustment and integrated storage compartment.



■ **Standard seats³** for driver and front passenger with manual adjustment of fore/aft position, backrest angle and headrest height, incl. seat height adjustment. The Easy Entry function – folding the entire seat forward – enables very comfortable access to the rear seats.



❑ The **Seat heating for driver and front passenger** enables the entire seat, backrest and side bolster surface to be heated.



❑ **Seat adjustment, electric**, for adjusting and saving seat height, backrest angle, fore/aft position and seat angle. In addition, the position of the exterior mirrors is saved. Memory function for saving two different driver's seat positions. (Standard for the BMW 4 Series Convertible; standard for the following versions of the BMW 4 Series Coupé: 440i/440i xDrive, 430d/430d xDrive and 435d xDrive).

❑ The **Lumbar support** for the driver and front passenger seats can be adjusted both vertically and laterally, allowing for an orthopaedically optimised seating position.

Optional and standard equipment vary according to country.

Standard / Optional equipment.



■ The **intelligent emergency call*** automatically establishes a connection with the nearest rescue coordination centre through the BMW call centre whenever needed – without the use of a mobile phone.



□ **Real Time Traffic Information (RTTI)¹*** captures the current traffic situation on motorways, major and minor roads and on key urban routes, delivering precise data on the extent of traffic congestion practically in real time and recommending the fastest and most efficient alternative routes.



□ **ConnectedDrive Services*** provides the basis for intelligent BMW ConnectedDrive Services and for the integration of selected smartphone apps.



□ When the vehicle is parked, the **TV function*** means that the car can receive digital television, including teletext and electronic programme guides. The Professional Navigation system is required for use.



□ **Internet*** provides access to the World Wide Web on the Control Display and includes a data flat rate (no roaming). The iDrive Controller is used to surf the internet.



□ **Surround View** includes the Rear View Camera² with Top View as well as Side View, thus providing a 270-degree view of the vehicle's environment. This system provides support when parking and manoeuvring in confined spaces with reduced visibility (available in conjunction with Rear View camera).



□ **Message dictation¹*** transforms spoken messages into text, which can then be sent off as an email or text message. This feature is free of charge for the first 60 days. After that, a contract with Nuance® is required for ongoing use.



□ The **Parking assistant** makes parking parallel and perpendicular to the road easier. The system works by measuring even tight potential parallel parking spaces while driving past at a low speed. When a suitable space has been found, the Parking assistant takes over the steering, while the driver is responsible for selecting the correct gear, as well as pressing the accelerator and brakes.



□ **Front and rear Park Distance Control (PDC)** makes parking and manoeuvring in tight spaces much easier. The proximity of obstacles is indicated acoustically, as well as visually in the Control Display. When driving forward at a speed below 3 km/h, the system automatically switches itself on when it reaches a distance of 60 cm from an obstacle.



□ **Comfort Access** enables keyless vehicle access (driver's door, front passenger door and luggage compartment lid). This feature includes vicinity lighting in the exterior door handles as well as no-touch opening of the luggage compartment lid through a short deliberate foot movement under the rear bumper at a distance of about 30cm. (This particular function is not available for the BMW 4 Series Convertible.) For the BMW 4 Series Convertible, Comfort Access also enables the opening and closing of the top.



□ **Storage compartment package for the Coupé** includes a lidded storage compartment on the driver's side, nets on the front seatbacks, 12V sockets in the rear centre console and the luggage compartment, a storage net on the right-hand side of the luggage compartment, a strap on the right-hand side of the luggage compartment, a net on the luggage compartment floor, two bag hooks in the luggage compartment and an under-floor storage bin (shown above).

□ **Storage compartment package for the Convertible** includes a lidded storage compartment on the driver's side as well as two hooks for bags, a floor net and a 12V socket in the luggage compartment.



■ **Storage compartments** including a lidded compartment in the front centre console, two cup holders at the front, a glove box and door compartments capable of accommodating a one-litre bottle each. Located between the rear seats: a large beverage holder (only available for the BMW 4 Series Convertible) and an open storage area.



■ **Drinks holders.** Two cup holders situated in the centre console in front of the gear selector lever and a large cup holder integrated into the storage compartment between the rear seats. The cover for the cup holders at the front (see image) provides additional storage space.



■ **Personal Profile** uses the vehicle key to save your individual settings for such things as the temperature and air distribution of the automatic air conditioning as well as seat and exterior mirrors positions. These settings will be applied when you unlock the car with your personal key.



□ **BMW Service Inclusive.** Service costs are another area where your BMW Service partner can offer you an intelligent solution. With BMW Service Inclusive, routine maintenance services will be provided at no extra cost, for the agreed duration or mileage. More information is available at www.bmw.com/serviceinclusive

* May not be available in all countries. Please consult your BMW partner.

¹ This feature requires ConnectedDrive Services* equipment.

² For models with a trailer tow hitch, the Rear View camera comes with an extended zoom function.

Optional and standard equipment vary according to country.

| BMW 4 Series Convertible | | 420i | 430i 430i xDrive | 440i 440i xDrive | 420d | 425d | 430d | 435d xDrive |
|--------------------------|--|------|---------------------|---------------------|------|------|------|-------------|
|--------------------------|--|------|---------------------|---------------------|------|------|------|-------------|

| Weight | | | | | | | | |
|---|----|--------------------------|--------------------------|-------------|--------------------------|--------------------------|-------------|-------------|
| Unladen weight EU ¹ | kg | 1775 [1790] | 1785 [1810] | [1845] | 1775 [1790] | 1810 [1820] | [1845] | - |
| Unladen weight EU ¹ (xDrive) | kg | - | [1880] | [1925] | - | - | - | [1925] |
| Max. permissible weight | kg | 2170 [2185] | 2170 [2195] | [2230] | 2170 [2185] | 2205 [2215] | [2220] | - |
| Max. permissible weight (xDrive) | kg | - | [2255] | [2300] | - | - | - | [2290] |
| Permitted load | kg | 470 [470] | 460 [460] | [460] | 470 [470] | 470 [470] | [450] | - |
| Permitted load (xDrive) | kg | - | [450] | [450] | - | - | - | [440] |
| Permitted trailer load, unbraked ² | kg | 695 [695] | 745 [745] | [750] | 745 [745] | 750 [750] | [750] | - |
| Permitted trailer load, unbraked ² (xDrive) | kg | - | [750] | [750] | - | - | - | [750] |
| Permitted trailer load, braked, max. 12% gradient/8% gradient ² | kg | 1400/1400 [1500/1500] | 1600/1600 [1600/1600] | [1700/1700] | 1600/1600 [1600/1600] | 1800/1600 [1800/1600] | [1800/1800] | - |
| Permitted trailer load, braked, max. 12% gradient/8% gradient ² (xDrive) | kg | - | [1700/1700] | [1800/1800] | - | - | - | [1800/1800] |
| Luggage compartment capacity min. – max. | l | 220–370 | 220–370 | 220–370 | 220–370 | 220–370 | 220–370 | 220–370 |

| Engine ^{3,4} | | | | | | | | |
|--------------------------|-----------------|-------------------------|--------------------|--------------------|--------------------|--------------------|--------------------|--------------------|
| Cylinders/valves | | 4/4 | 4/4 | 6/4 | 4/4 | 4/4 | 6/4 | 6/4 |
| Capacity | cc | 1998 | 1998 | 2998 | 1995 | 1995 | 2993 | 2993 |
| Max. output/engine speed | kW (hp)/ rpm | 135 (184)/ 5000 | 185 (252)/ 5200 | 240 (326)/ 5500 | 140 (190)/ 4000 | 160 (224)/ 4400 | 190 (258)/ 4000 | 230 (313)/ 4400 |
| Max. torque/engine speed | Nm/rpm | 290 [270]/ 1350–4600 | 350/ 1450–4800 | 450/ 1380–5000 | 400/ 1750–2500 | 450/ 1500–3000 | 560/ 1500–3000 | 630/ 1500–2500 |

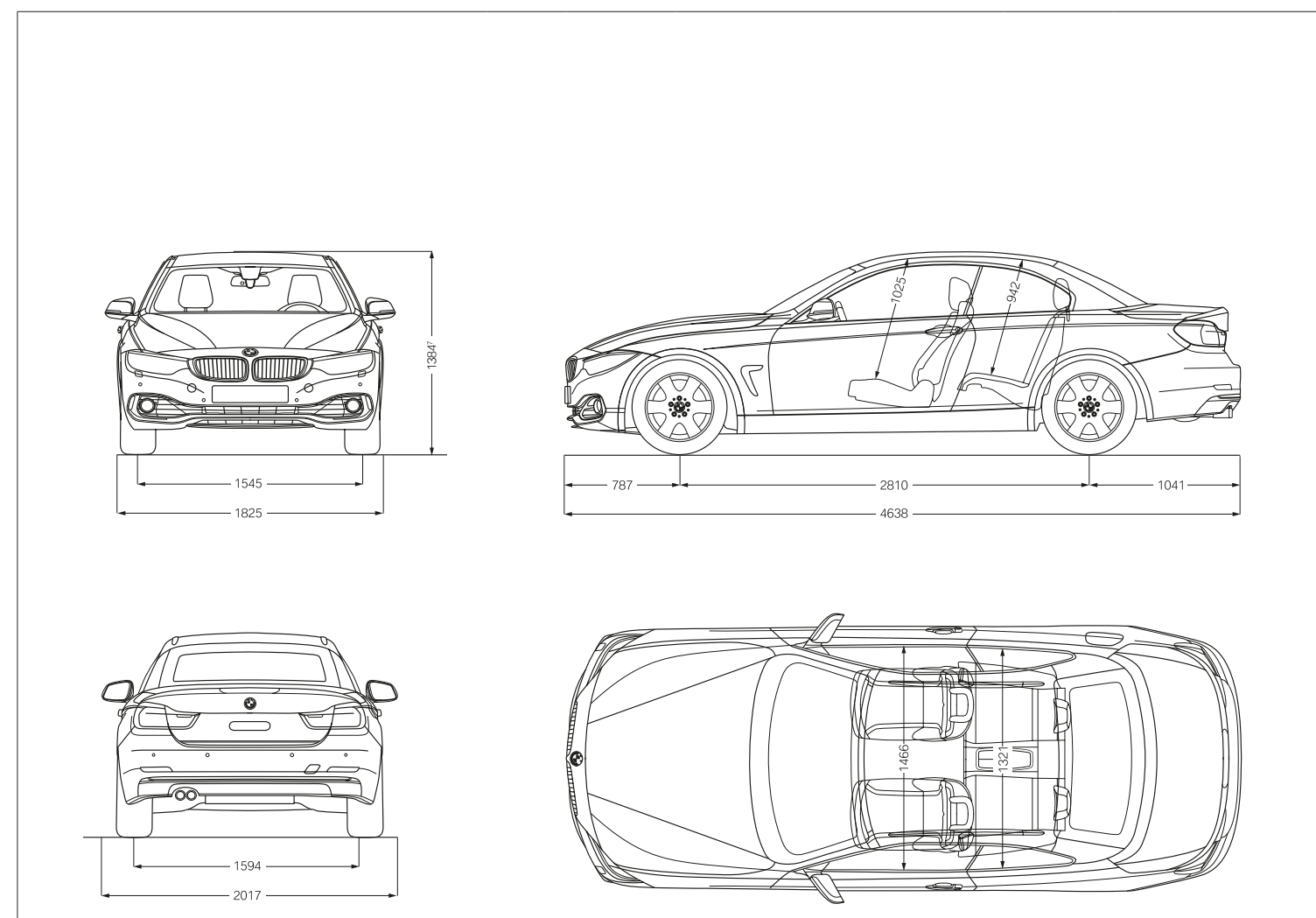
| Power Transmission | | | | | | | | |
|--------------------------------|--|---------------------|---------------------------|---------------------------|---------------------|---------------------|---------------------------|---------------------------|
| Drive configuration | | Rear-wheel | Rear-wheel/ all-wheel | Rear-wheel/ all-wheel | Rear-wheel | Rear-wheel | Rear-wheel | All-wheel |
| Standard transmission | | Six-speed manual | Six-speed Steptronic | Eight-speed Steptronic | Six-speed manual | Six-speed manual | - | - |
| Standard transmission (xDrive) | | - | Eight-speed Steptronic | Eight-speed Steptronic | - | - | Eight-speed Steptronic | Eight-speed Steptronic |

| Performance | | | | | | | | |
|---------------------------------|------|-----------|--------------------------------------|---------------------|-----------|-----------|---------------------|---------------------|
| Top speed | km/h | 230 [230] | 250 ⁶ [250 ⁶] | [250 ⁶] | 235 [228] | 241 [241] | [250 ⁶] | - |
| Top speed (xDrive) | km/h | - | [250 ⁶] | [250 ⁶] | - | - | - | [250 ⁶] |
| Acceleration 0–100km/h | s | 8.2 [8.4] | 6.4 [6.3] | [5.4] | 8.1 [8.0] | 7.1 [6.7] | [5.9] | - |
| Acceleration 0–100km/h (xDrive) | s | - | [6.4] | [5.4] | - | - | - | [5.2] |

| Fuel consumption ^{3,4,5} | | | | | | | | |
|------------------------------------|---------|----------------------|----------------------|------------|----------------------|----------------------|-----------|-----------|
| Urban | l/100km | 8.0–8.6 [7.6–8.1] | 8.6–9.0 [7.5–7.9] | [9.1–9.5] | 5.7–6.1 [5.2–5.6] | 6.1–6.5 [5.5–5.9] | [6.1–6.3] | - |
| Urban (xDrive) | l/100km | - | [8.1–8.5] | [9.8–10.3] | - | - | - | [6.8–7.0] |
| Extra-urban | l/100km | 5.1–5.5 [4.8–5.1] | 5.5–5.8 [5.0–5.3] | [5.5–5.8] | 4.3–4.5 [3.9–4.2] | 4.5–4.7 [4.4–4.7] | [4.8–5.0] | - |
| Extra-urban (xDrive) | l/100km | - | [5.4–5.7] | [5.8–6.1] | - | - | - | [5.2–5.3] |
| Combined | l/100km | 6.2–6.6 [5.8–6.2] | 6.6–7.0 [5.9–6.3] | [6.8–7.2] | 4.8–5.1 [4.4–4.7] | 5.1–5.4 [4.8–5.1] | [5.3–5.5] | - |
| Combined (xDrive) | l/100km | - | [6.4–6.7] | [7.3–7.6] | - | - | - | [5.7–5.9] |
| CO ₂ emissions | g/km | 145–153 [136–144] | 154–162 [138–146] | [159–167] | 127–134 [116–124] | 133–141 [127–135] | [139–144] | - |
| CO ₂ emissions (xDrive) | g/km | - | [149–156] | [169–177] | - | - | - | [151–155] |
| Tank capacity, approx. | l | 60 | 60 | 60 | 57 | 57 | 57 | 57 |

| BMW 4 Series Convertible | | 420i | 430i 430i xDrive | 440i 440i xDrive | 420d | 425d | 430d | 435d xDrive |
|--------------------------|--|------|---------------------|---------------------|------|------|------|-------------|
|--------------------------|--|------|---------------------|---------------------|------|------|------|-------------|

| Wheels/Tyres | | | | | | | | |
|------------------|--|---------------|---------------|---------------|---------------|---------------|---------------|---------------|
| Tyre dimensions | | 225/50 R 17 W | 225/50 R 17 W | 225/50 R 17 W | 225/50 R 17 W | 225/50 R 17 W | 225/50 R 17 W | 225/50 R 17 W |
| Wheel dimensions | | 7.5 J x 17 | 7.5 J x 17 | 7.5 J x 17 | 7.5 J x 17 | 7.5 J x 17 | 7.5 J x 17 | 7.5 J x 17 |
| Material | | light alloy | light alloy | light alloy | light alloy | light alloy | light alloy | light alloy |



All dimensions in the technical drawings in millimetres.

- ¹ The figure quoted includes a 90 per cent tank filling, 68kg for the driver and 7kg for luggage. Unladen weight applies to vehicles with standard equipment. Optional equipment may increase this figure.
- ² The overall weight of the trailer must not exceed the maximum permissible trailer load, taking into account the maximum permissible towbar download.
- ³ BMW recommends the use of RON 95 super unleaded fuel. Engines may be run on lower-grade unleaded fuel (minimum RON 91) with a maximum ethanol content of 10 per cent. Output and fuel consumption figures apply to RON 98 fuel.
- ⁴ All engines comply with the EU 6 emissions standard. Fuel consumption figures are determined according to the ECE driving cycle, which consists of approximately one-third urban traffic and

- two-thirds extra-urban driving (based on the distance covered). CO₂ emissions are measured in addition to fuel consumption. Optional equipment may increase these figures.
- ⁵ Fuel consumption and CO₂ emission figures are dependent on tyre format (higher figures refer to models with optional wheels). For further information on fuel consumption and CO₂ emissions contact your BMW partner.
- ⁶ Electronically limited.
- ⁷ Height for models with xDrive is 1,399mm.

Figures in [] apply to vehicles with eight-speed Steptronic transmission.

| | | | | | | | | | |
|---------------------------|-----------------------------|-----------------------------|-----------------------------|-------------|-----------------------------|-------------|-----------------------------|--------------------|--|
| BMW 4 Series Coupé | | | | | | | | | |
| | 420i 420i xDrive | 430i 430i xDrive | 440i 440i xDrive | 418d | 420d 420d xDrive | 425d | 430d 430d xDrive | 435d xDrive | |

| Weight | | | | | | | | | |
|---|----|--------------------------|--------------------------|--------------------------|--------------------------|--------------------------|--------------------------|-------------|-------------|
| Unladen weight EU ¹ | kg | 1550 [1570] | 1565 [1585] | 1615 [1630] | 1535 [1560] | 1550 [1575] | 1580 [1590] | [1615] | - |
| Unladen weight EU ¹ (xDrive) | kg | 1635 [1645] | [1650] | 1685 [1700] | - | 1615 [1635] | - | [1690] | [1700] |
| Max. permissible weight | kg | 1995 [2015] | 2010 [2030] | 2060 [2075] | 1980 [2005] | 1995 [2020] | 2025 [2035] | [2060] | - |
| Max. permissible weight (xDrive) | kg | 2080 [2090] | [2095] | 2130 [2145] | - | 2060 [2080] | - | [2135] | [2145] |
| Permitted load | kg | 520 [520] | 520 [520] | 520 [520] | 520 [520] | 520 [520] | 520 [520] | [520] | - |
| Permitted load (xDrive) | kg | 520 [520] | [520] | 520 [520] | - | 520 [520] | - | [520] | [520] |
| Permitted trailer load, unbraked ² | kg | 695 [695] | 745 [745] | 750 [750] | 745 [745] | 750 [750] | 750 [750] | [750] | - |
| Permitted trailer load, unbraked ² (xDrive) | kg | 750 [750] | [750] | 750 [750] | - | 750 [750] | - | [750] | [750] |
| Permitted trailer load, braked, max. 12% gradient/ 8% gradient ² | kg | 1400/1400 [1500/1500] | 1600/1600 [1600/1600] | 1700/1700 [1700/1700] | 1600/1600 [1600/1600] | 1600/1600 [1600/1600] | 1800/1800 [1800/1800] | [1800/1800] | - |
| Permitted trailer load, braked, max. 12% gradient/ 8% gradient ² (xDrive) | kg | 1700/1700 [1700/1700] | [1700/1700] | 1800/1800 [1800/1800] | - | 1600/1600 [1600/1600] | - | [1800/1800] | [1800/1800] |
| Luggage compartment capacity | l | 445 | 445 | 445 | 445 | 445 | 445 | 445 | 445 |

| Engine^{3,4} | | | | | | | | | |
|-----------------------------|-----------------|---|--------------------|--------------------|--------------------|--------------------|--------------------|--------------------|--------------------|
| Cylinders/valves | | 4/4 | 4/4 | 6/4 | 4/4 | 4/4 | 4/4 | 6/4 | 6/4 |
| Capacity | cc | 1998 | 1998 | 2998 | 1995 | 1995 | 1995 | 2993 | 2993 |
| Max. output/engine speed | kW (hp)/ rpm | 135 (184)/ 5000 | 185 (252)/ 5200 | 240 (326)/ 5500 | 110 (150)/ 4000 | 140 (190)/ 4000 | 165 (224)/ 4400 | 190 (258)/ 4000 | 230 (313)/ 4400 |
| Max. torque/engine speed | Nm/rpm | 290 [270]/ (270 [270])/ 1350-4600 | 350/ 1450-4800 | 450/ 1380-5000 | 320/ 1500-3000 | 400/ 1750-2500 | 450/ 1500-3000 | 560/ 1500-3000 | 630/ 1500-2500 |

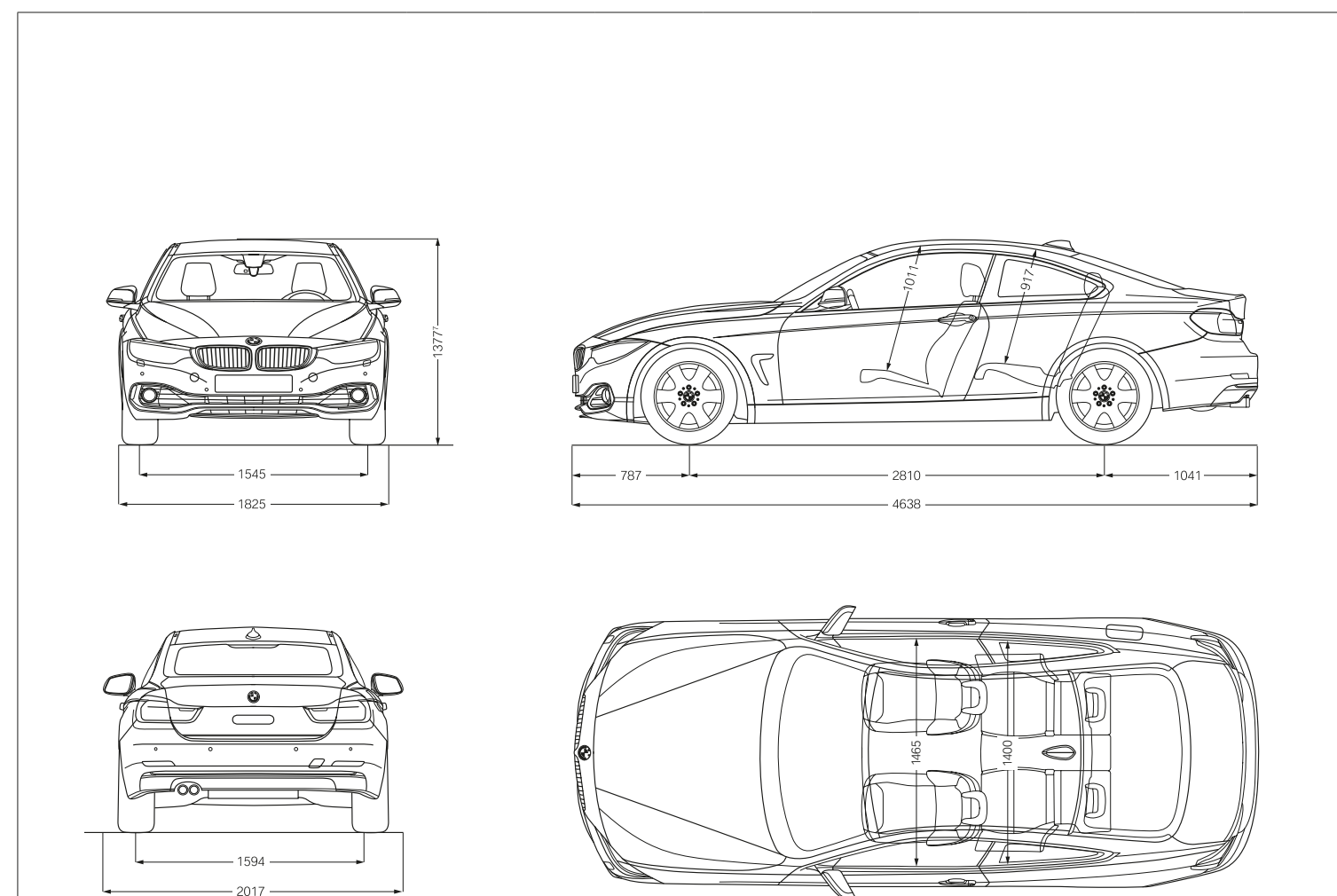
| Power Transmission | | | | | | | | | |
|--------------------------------|--|--------------------------|---------------------------|--------------------------|---------------------|--------------------------|---------------------|---------------------------|---------------------------|
| Drive configuration | | Rear-wheel/ all-wheel | Rear-wheel/ all-wheel | Rear-wheel/ all-wheel | Rear-wheel | Rear-wheel/ all-wheel | Rear-wheel | Rear-wheel/ all-wheel | All-wheel |
| Standard transmission | | Six-speed manual | Six-speed manual | Six-speed manual | Six-speed manual | Six-speed manual | Six-speed manual | Eight-speed Steptronic | - |
| Standard transmission (xDrive) | | Six-speed manual | Eight-speed Steptronic | Six-speed manual | - | Six-speed manual | - | Eight-speed Steptronic | Eight-speed Steptronic |

| Performance | | | | | | | | | |
|---------------------------------|------|-----------|--------------------------------------|--------------------------------------|-----------|-----------|-----------|---------------------|---------------------|
| Top speed | km/h | 236 [236] | 250 ⁶ [250 ⁶] | 250 ⁶ [250 ⁶] | 215 [213] | 240 [232] | 247 [247] | [250 ⁶] | - |
| Top speed (xDrive) | km/h | 233 [231] | [250 ⁶] | 250 ⁶ [250 ⁶] | - | 236 [230] | - | [250 ⁶] | [250 ⁶] |
| Acceleration 0-100km/h | s | 7.3 [7.5] | 5.9 [5.8] | 5.2 [5.0] | 8.6 [8.6] | 7.3 [7.1] | 6.5 [6.1] | [5.5] | - |
| Acceleration 0-100km/h (xDrive) | s | 7.6 [7.8] | [5.8] | 5.0 [4.9] | - | 7.4 [7.2] | - | [5.2] | [4.7] |

| Fuel consumption^{3,4,5} | | | | | | | | | |
|---|---------|----------------------|----------------------|------------------------|----------------------|----------------------|----------------------|-----------|-----------|
| Urban | l/100km | 7.7-8.1 [7.1-7.6] | 7.9-8.4 [7.0-7.4] | 10.0-10.4 [8.8-9.1] | 5.0-5.4 [5.0-5.3] | 5.1-5.5 [4.7-5.1] | 5.6-5.9 [5.0-5.4] | [5.7-5.9] | - |
| Urban (xDrive) | l/100km | 8.7-9.0 [7.7-8.1] | [7.5-7.8] | 10.4-10.7 [9.3-9.7] | - | 5.3-5.8 [5.2-5.6] | - | [6.0-6.2] | [6.4-6.6] |
| Extra-urban | l/100km | 4.7-4.9 [4.5-4.7] | 5.1-5.4 [4.7-4.9] | 5.9-6.1 [5.3-5.5] | 3.7-3.9 [3.6-3.9] | 3.7-3.9 [3.6-3.9] | 4.0-4.3 [4.1-4.3] | [4.5-4.6] | - |
| Extra-urban (xDrive) | l/100km | 5.4-5.7 [4.8-5.1] | [5.0-5.2] | 6.1-6.3 [5.6-5.9] | - | 3.9-4.1 [4.0-4.2] | - | [4.8-4.9] | [4.9-5.0] |
| Combined | l/100km | 5.8-6.1 [5.5-5.8] | 6.1-6.5 [5.5-5.8] | 7.4-7.7 [6.6-6.8] | 4.2-4.5 [4.1-4.4] | 4.2-4.5 [4.0-4.3] | 4.6-4.9 [4.4-4.7] | [4.9-5.1] | - |
| Combined (xDrive) | l/100km | 6.6-6.9 [5.9-6.2] | [5.9-6.2] | 7.7-7.9 [7.0-7.3] | - | 4.4-4.7 [4.4-4.7] | - | [5.2-5.4] | [5.4-5.6] |
| CO ₂ emissions | g/km | 134-141 [127-134] | 143-151 [129-136] | 172-179 [154-159] | 110-118 [109-117] | 111-119 [106-114] | 121-129 [116-124] | [129-134] | - |
| CO ₂ emissions (xDrive) | g/km | 154-161 [137-144] | [138-144] | 179-185 [162-169] | - | 117-125 [117-125] | - | [137-142] | [143-147] |
| Tank capacity, approx. | l | 60 | 60 | 60 | 57 | 57 | 57 | 57 | 57 |

| | | | | | | | | | |
|---------------------------|-----------------------------|-----------------------------|-----------------------------|-------------|-----------------------------|-------------|-----------------------------|--------------------|--|
| BMW 4 Series Coupé | | | | | | | | | |
| | 420i 420i xDrive | 430i 430i xDrive | 440i 440i xDrive | 418d | 420d 420d xDrive | 425d | 430d 430d xDrive | 435d xDrive | |

| Wheels/Tyres | | | | | | | | |
|---------------------|--|---------------|---------------|---------------|---------------|---------------|---------------|---------------|
| Tyre dimensions | | 225/50 R 17 W | 225/50 R 17 W | 225/50 R 17 W | 225/50 R 17 V | 225/50 R 17 W | 225/50 R 17 W | 225/50 R 17 W |
| Wheel dimensions | | 7.5 J x 17 | 7.5 J x 17 | 7.5 J x 17 | 7.5 J x 17 | 7.5 J x 17 | 7.5 J x 17 | 7.5 J x 17 |
| Material | | light alloy | light alloy | light alloy | light alloy | light alloy | light alloy | light alloy |



All dimensions in the technical drawings in millimetres.

¹ The figure quoted includes a 90 per cent tank filling, 68kg for the driver and 7kg for luggage. Unladen weight applies to vehicles with standard equipment. Optional equipment may increase this figure.
² The overall weight of the trailer must not exceed the maximum permissible trailer load, taking into account the maximum permissible towbar download.
³ BMW recommends the use of RON 95 super unleaded fuel. Engines may be run on lower-grade unleaded fuel (minimum RON 91) with a maximum ethanol content of 10 per cent. Output and fuel consumption figures apply to RON 98 fuel.
⁴ All engines comply with the EU 6 emissions standard. Fuel consumption figures are determined according to the ECE driving cycle, which consists of approximately one-third urban traffic and two-thirds extra-urban driving (based on the distance covered). CO₂ emissions are measured in addition to fuel consumption. Optional equipment may increase these figures.
⁵ Fuel consumption and CO₂ emission figures are dependent on tyre format (higher figures refer to models with optional wheels). For further information on fuel consumption and CO₂ emissions contact your BMW partner.
⁶ Electronically limited.
⁷ Height for models with xDrive 1,392mm.
 Figures in [] apply to vehicles with eight-speed Steptronic transmission.

WELL TAKEN CARE OF WITH BMW SERVICES:

When you buy a BMW, you can look forward to superb service and comprehensive customer care. For example, the **Condition Based Service** independently tracks both service fluid levels and the condition of parts subject to wear and then notifies you in the display when the vehicle requires servicing. So you only need to go to your BMW service partner when it's really necessary. When you do go, our

qualified BMW service specialists take care of your vehicle using the newest workshop technology and only **original BMW parts**. This service is available worldwide in more than 3,300 BMW service partner establishments in over 150 countries, to provide you with limitless driving pleasure.

BMW SERVICE.



BMW Service Packages*: Individual and stress-free, just for you. Individual, well-thought-out servicing solutions carefully tailored to you and your vehicle. With one-off, predictable costs, BMW Service Packages give you complete peace of mind, so you can enjoy owning a BMW to the very fullest. Whether it's fresh from the showroom or already well-travelled – there's a BMW Service Package for every phase of your vehicle's life. All bringing you maximum quality, expertise and value retention, always at reasonable, transparent rates. And always carefully tailored to you and your BMW. Find out just how stress-free truly individual service can be!

www.bmw.com/serviceinclusive



BMW Mobile Service*: This service is there for you day and night. As soon as you call, we spring into action, and take care of everything that may need doing after an accident or breakdown, with specially trained technicians working – on site or via telephone – to get your car back on the road. We offer comprehensive, country-specific mobility packages for breakdowns, and insurance that covers you in the event of an accident or theft. So if anything untoward does happen, simply call up the BMW accident hotline and we'll go to work. We'll take care of calling the emergency services, a tow truck, a replacement car, notifying your insurance company and much more. For further information please visit www.bmw.com



BMW TeleServices*: With Condition Based Service, you'll be automatically reminded of your next necessary service appointment on the vehicle screen. Provided you've consented, key vehicle data will be relayed to BMW automatically for analysis. Your assigned BMW service partner will access the information and contact you free of charge to make a service appointment as and when necessary. To access BMW Teleservices, the vehicle must be equipped with the optional Intelligent Emergency Call or ConnectedDrive Services. The service can be deactivated at any time you so desire, and you can change your service partner in the iDrive menu or ConnectedDrive portal. Find out more at www.bmw.com/teleservices

BMW FINANCIAL SERVICE.



BMW Financial Services*: Mobility solutions to meet your needs. BMW Financial Services provides you with attractive leasing, finance and insurance options. To find out more, see the price list or go to www.bmwfs.com. Your BMW partner will also be glad to draw up an individual offer for you in person.

THE BMW EXPERIENCE.



BMW TV*: www.bmw.tv enables you to experience the BMW brand in all its diversity. Features, portraits and background reports provide you with information on automobiles, innovations, sports and lifestyle topics.



BMW Driving Experience: The better you control your BMW, the more enjoyment you will derive from driving it. Use our training courses to learn for yourself what it means to reach a car's physical limits on various types of surfaces, and what you have to do to control your vehicle even in extreme situations. For further information please visit www.bmwdrivingexperience.com



BMW Welt: Picking up a car at BMW Welt has always ranked among the best moments for any driver. Turn this moment into one whole unforgettable day: experience the handover of your new BMW as just one part of a programme of activities perfectly tailored to your interests. At BMW Welt, the BMW Group plant, the BMW Museum, the BMW Group headquarters and the BMW Group Classic all combine to provide you with a great experience of an exciting history, a breathtaking present – and spectacular visions for the future. Find out more at www.bmw-welt.com/en



BMW Magazine: In BMW Magazine, experience the newest BMW models in front of stunning backdrops. Discover new design trends, travel destinations and the richness of modern life. Encounter people with visionary ideas who are changing the world. Find out more at www.bmw.com/magazine

* May not be available in all countries. Please consult your BMW partner.

SHAPING THE FUTURE – RESPONSIBLY.

In 2015, the BMW Group was once more listed in the Dow Jones Sustainability Index as the most sustainable automotive company worldwide. This makes BMW Group the only company in the automotive industry to be listed without interruption since the index was established. The development of efficient vehicle concepts and environmentally friendly production processes, including recycling, is an integral part of our philosophy. BMW EfficientDynamics and electric vehicles have enabled us to cut CO₂ emissions from our European new-vehicle fleet by more than 40% since 1995. We have also reduced the amount of resources used in production, such as water and energy, by 34% between 2006 and 2015, with a reduction to 45% of previous levels aimed at for 2020. In terms of other resources (such as volatile organic compounds, process wastewater and waste) our 45% target was met in 2014, and we will continue to work on further improvement. Production at our engine plant in Steyr has been waste-water free since 2007. And of course, at the end of its service life, every one of our vehicles can be easily and economically recycled. To return your end-of-life vehicle, please contact your BMW partner. For more information on this issue please visit our website.

www.bmw.com/EfficientDynamics
www.bmwgroup.com/responsibility
www.bmw.com/recycling

More about BMW



Sheer
Driving Pleasure

www.bmw.com



The models illustrated in this brochure show the specifications and configurations (standard and optional equipment) of vehicles produced by BMW AG for the German market. According to the specific requirements of other markets, alterations in standard and optional equipment and the configurations available for the different models, as described in this brochure, may occur. For more precise information about country-specific vehicle versions, please contact your local BMW partner. Subject to change in design and equipment.

© BMW AG, Munich/Germany. Not to be reproduced wholly or in part without written permission of BMW AG, Munich.

4 11 004 228 20 2 2016 BM. Printed in Germany 2016.

